

Dan A. Myers, M.D.
Chairman, North Carolina State Health Coordinating Council
c/o Medical Facilities Planning Section
Division of Health Service Regulation
2714 Mail Service Center
Raleigh, NC 27699-2714

**Re: Mission Hospital's Petition for Adjustment to Acute Care Bed Need
Determination for 9 Acute Care Beds in Buncombe County, North Carolina.**

I. Petitioner

Brian D. Moore
Director, Strategic Planning
Mission Hospital
428 Biltmore Ave.
Asheville, NC 28801
(828) 213-3509
Brian.moore@msj.org

II. Requested Adjustment

Mission Hospital is submitting this petition for an adjustment in Table 5A: Acute Care Bed Need Projections the *Proposed 2010 State Medical Facilities Plan* for 9 new acute care beds in Buncombe County. The *Proposed 2010 State Medical Facilities Plan* currently identifies a need for 9 additional acute care beds in Buncombe County in Column J of Table 5A. However, Step 8.b. of the Acute Care Bed Need Methodology requires a need for 20 beds be identified before inclusion as need in Column K of Table 5A in the SMFP. Mission Hospital is asking that Step 8.b. be determined as not applicable for Buncombe County and that the 9 acute care beds identified as needed in Column J be reflected as a 2014 Need Determination in Column K of Table 5A and Table 5B: Acute Care Bed Need Determination.

Mission Hospital operates the only licensed acute care hospital in Buncombe County and is the largest provider of inpatient hospital care in its 18 county service area. Mission Hospital serves as the regional tertiary referral hospital for western North Carolina, providing such tertiary services such open heart surgery, cardiac catheterization, trauma, neonatal intensive care, and advanced cancer care.

III. Reasons for Proposed Adjustment

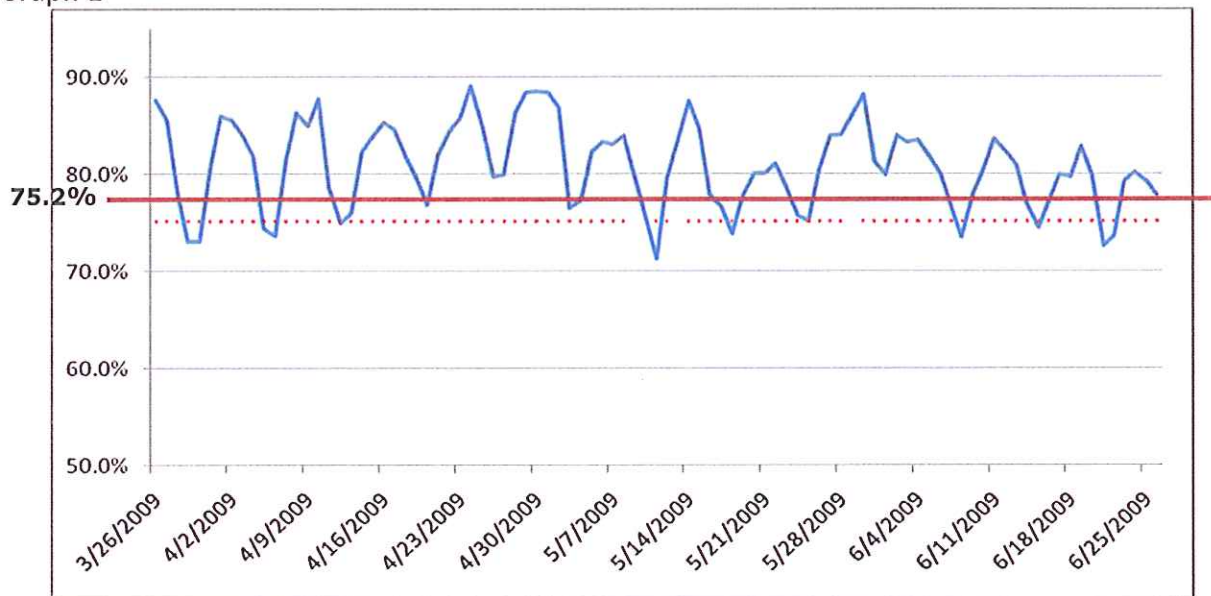
High Utilization of Acute Care Beds at Mission Hospital

Mission Hospital is licensed for 673 acute inpatient hospital beds based on the 2009 Licensure Renewal Application and the *Proposed 2010 State Medical Facilities Plan*. Mission Hospital's average inpatient occupancy rate for FY 2008 was 76.1%¹ based upon Thomson data reflected in the *Proposed 2010 SMFP*. The state's target planning occupancy rate for hospitals with an average daily census of greater than 200 is 75.2%.

For the first nine months in FY 2009 (October 1, 2008 through June 30, 2009) occupancy at Mission Hospital has increased to 78.1% and in the last three months occupancy of the existing 673 acute care beds has exceeded 80%.

Average daily census at Mission has been over 85% of total licensed bed capacity for 13 of the last 90 days and over 80% for 50 of the last 90 days. The following graph shows the average daily census at Mission from March 26, 2009 through June 25, 2009. The mean for this 90 day period is 80.9% which is higher than the state's target occupancy rate for hospitals with an average daily census of greater than 200 of 75.2%. During this time period Mission has rarely been below the target planning occupancy of 75.2%.

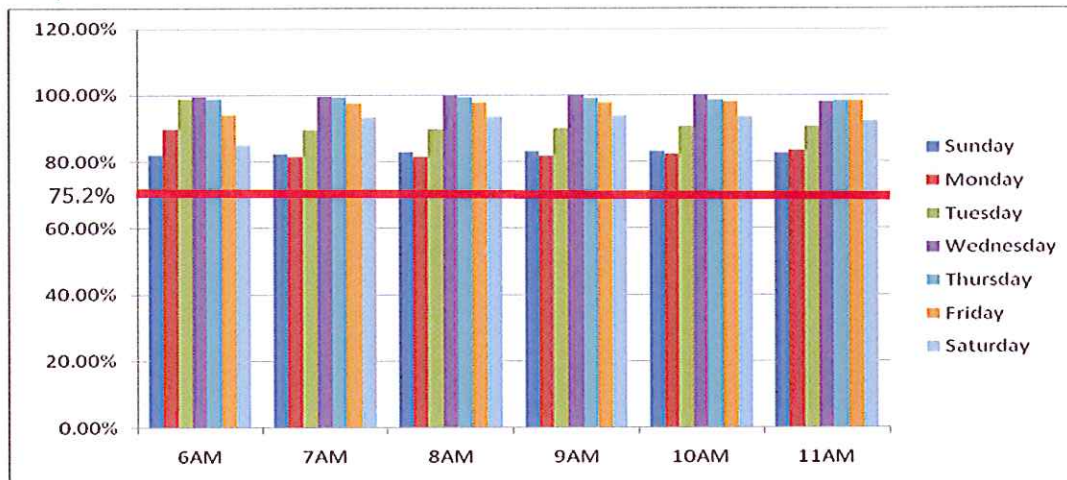
Graph 1



¹ Calculation: (186,888 patient days)/(365 days per year)=Average Daily Census and 511.8 ADC/673 Licensed Acute Beds) = 76% occupancy

In addition, as the following graph illustrates, Mission Hospital historically operates at a much higher occupancy rates during peak hours of the day, 6AM-11AM, and during the middle of the week, Tuesday through Friday, reaching occupancy rates of 100%, much higher than the state's target occupancy rate of 75.2%.

Graph 2



Mission Hospital Inpatient admission data

Pending Changes in the Acute Care Bed Need Methodology

The SHCC Acute Care Bed Need Methodology Work Group began work earlier this year charged with reviewing and amending as necessary the existing Acute Care Bed Need Methodology. This Work Group met once and decided to delay any action on the methodology until the 2011 SMFP. However, the Work Group did acknowledge that some hospitals could potentially request an adjustment to the bed need as a result of the delay due to individual hospital circumstances and the need for additional acute care beds. Mission Hospital is one such hospital.

One methodology reviewed by the Work Group was the use of county specific hospital utilization growth rates to project future bed need. As reflected in Attachment 1, this methodology resulted in a need for 91 additional acute care beds at Mission Hospital by 2013 based upon FY 2007 data.

Mission Hospital however, is petitioning to add only 9 new acute care beds at this time to meet the critical need for acute care beds during the next year. The Acute Care Bed Need Methodology Work Group will reconvene later in 2009 to review and consider changes to the

existing Acute Care Bed Need Methodology. Mission Hospital is represented on the Work Group and will work within the structure of the Work Group to address future need for additional acute care beds.

The SMFP applied statewide growth factor is not based on based on aggregate acute care patient days reflected in Table 5A in the SMFP

Table 5A of the annual SMFP reflects total acute care days by hospital for all hospitals in North Carolina. However, the SMFP applied statewide growth factor is not determined using data included in Table 5A. The acute care SMFP statewide growth factor used to project future acute care days is provided to the DHSR Medical Facilities Planning Section annually by the Sheps Center and is based upon total patient day growth across North Carolina in all acute care hospitals and includes rehabilitation patient days and psychiatric patient days. At the time the current Acute Care Bed Need Methodology was implemented this was a reasonable growth rate to use due to data anomalies within hospital data and limited changes in utilization of rehabilitation and psychiatric hospital beds. However since the methodology was implemented in 2004, Thomson data from hospitals has improved significantly and decreases in utilization of rehabilitation and psychiatric hospital beds in acute care hospital units have occurred. Today, data included in Table 5A of the SMFP better reflects accurate acute care patient days in hospitals and is used here to reflect the need for additional acute care beds at Mission Hospital.

Mission Hospital totaled the actual number of inpatient days from Table 5A, Column F of the 2004 SMFP through the Proposed 2010 SMFP to compare the Table 5A growth rate to the growth rate used to project future acute care patient days in the annual SMFP (Attachment 2). The growth rate used annually to project future acute care patient days in the Acute Care Bed Need Methodology is not consistent with data used in Table 5A, column F of the SMFPs. Table 5A in the SMFP includes actual Thompson patient days for all acute care hospitals. These patient days are then used to project future patient days. Using the actual Thomson patient days provided in Table 5A, Column F of the SMFP to calculate the three year average growth rate results in a considerably higher three year average growth rate for acute care patient days provided in North Carolina hospitals than the growth rate utilized in the *Proposed 2010 SMFP*.

The table below reflects the actual aggregate acute care patient days from Table 5A, Column F and the historical data upon which the annual SMFP growth rates have been determined. The annual change was calculated and a three year average obtained. The current, calculated three year average growth rate (2005-2008) based on actual patient days from Table 5A is 0.42% versus the applied statewide growth rate factor in the *Proposed 2010 SMFP* which is 0.02%.

Table 1

| Federal Fiscal Year | Data Source | Sum of All Acute Care Hospital Days in Annual SMFP Table 5A | | | Total In-State Days From NC Acute Care Hospitals (4.30.08) - Provided at the May 8, 2008 Acute Care Services Committee Meeting | | |
|---------------------|--------------------|---|---------------|-----------------------|--|---------------|-----------------------|
| | | Total NC Acute Care Patient Days | Annual Change | Three Year Avg Growth | NC Acute Care Hospitals' Total Patient Days | Annual Change | Three Year Avg Growth |
| 2002 | 2004 SMFP | 4,252,506 | | | 4,480,926 | | |
| 2003 | 2005 SMFP | 4,537,876 | 6.71% | | 4,576,550 | 2.13% | |
| 2004 | 2006 SMFP | 4,445,232 | -2.04% | 1.56% | 4,679,727 | 2.25% | 1.46% |
| 2005 | 2007 SMFP | 4,455,569 | 0.23% | 1.63% | 4,695,848 | 0.34% | 1.58% |
| 2006 | 2008 SMFP | 4,448,930 | -0.15% | -0.65% | 4,639,819 | -1.19% | 0.47% |
| 2007 | 2009 SMFP | 4,511,691 | 1.41% | 0.50% | 4,680,021 | 0.87% | 0.01% |
| 2008 | Proposed 2010 SMFP | 4,511,555 | 0.00% | 0.42% | Data Not Available | | 0.02% |

Source: SMFPs; Attachment 3; Handouts from May 8, 2008 Acute Care Services Committee Meeting

The following table reflects projected patient days for Mission Hospital reflected in each annual SMFP since the current methodology was implemented compared to actual inpatient utilization.

Table 2

| | 2004 SMFP Using 2002 Data to Project 2008 Pt Days | 2005 SMFP Using 2003 Data to Project 2009 Pt Days | 2006 SMFP Using 2004 Data to Project 2010 Pt Days | 2007 SMFP Using 2005 Data to Project 2011 Pt Days | 2008 SMFP Using 2006 Data to Project 2012 Pt Days | 2009 SMFP Using 2007 Data to Project 2013 Pt Days |
|---|---|---|---|---|---|---|
| Projected Patient Days | 184,061 | 180,502 | 186,609 | 187,545 | 181,474 | 182,499 |
| Actual Utilization Data - Year | 2003 | 2004 | 2005 | 2006 | 2007 | 2008 |
| Actual Patient Days | 168,534 | 170,460 | 170,709 | 176,440 | 182,390 | 186,888 |
| Following Year Patient Days as Percent of Total Six Year Projected Patient Days | 91.6% | 94.4% | 91.5% | 94.1% | 100.5% | 102.4% |
| Actual utilization compared to 2008 Projected 2008 Patient Days in 2004 SMFP | | | | | | 101.5% |

Source: SMFPs

As shown in the previous table, projected patient days for Mission Hospital included in the annual 2004 SMFP through the 2009 SMFP were drastically understated in the last two years where utilization one year later exceeded the six year projection from the previous year. In addition, projected utilization for 2008, included in the 2004 SMFP was understated by nearly three thousand patient days which represents an ADC of 7.7 patients per day or 10 additional projected acute care beds at 75.2%, the target occupancy level for acute care facilities with ADC

exceeding 200 patients per day. Until this year, acute care bed capacity at Mission has been sufficient to make up for the understated projections. However, current utilization of Mission Hospital acute care beds has reached a critical point and new acute care beds are needed.

The SMFP applied statewide growth factor is too low and does not reflect Buncombe County's growth and demand for inpatient beds

The *Proposed 2010 SMFP* identifies a **9 bed deficit** Buncombe County. The *2009 State Medical Facilities Plan* identified an **8 bed surplus** in Buncombe County, and the *2008 SMFP* identified a **12 bed surplus** in Buncombe County. This trend reflects the continuing growth in patient days at Mission Hospital and supports the approval of this Petition.

The applied statewide growth factor is the statewide annual average inpatient day growth rate and is a key element in the state's formula for new acute bed need determinations. For the *Proposed 2010 SMFP*, the applied statewide growth factor is 0.02%. In the *2009 SMFP* and *2008 SMFP*, the applied statewide growth factors have been 0.01% and 0.47% respectively. Actual growth in Buncombe County has been significantly higher. The most current three year growth rate for Buncombe County acute care inpatient days, based upon actual acute care days reflected in Table 5A of the annual *SMFP* exceeds 3.0%.

The following table shows:

- The historical SMFP applied statewide growth factor for patient days used in the state's county-level new acute bed need determination formula for the 2008-2010 SMFPs
- The average patient day growth rates for Mission Hospital located in Buncombe County for the last three years reflected in the 2008-2010 SMFPs
- The average patient day growth rates for all large, urban hospitals with the exclusion of academic centers and with greater than 300 licensed beds averaged over the last three years reflected in the 2008-2010 SMFPs

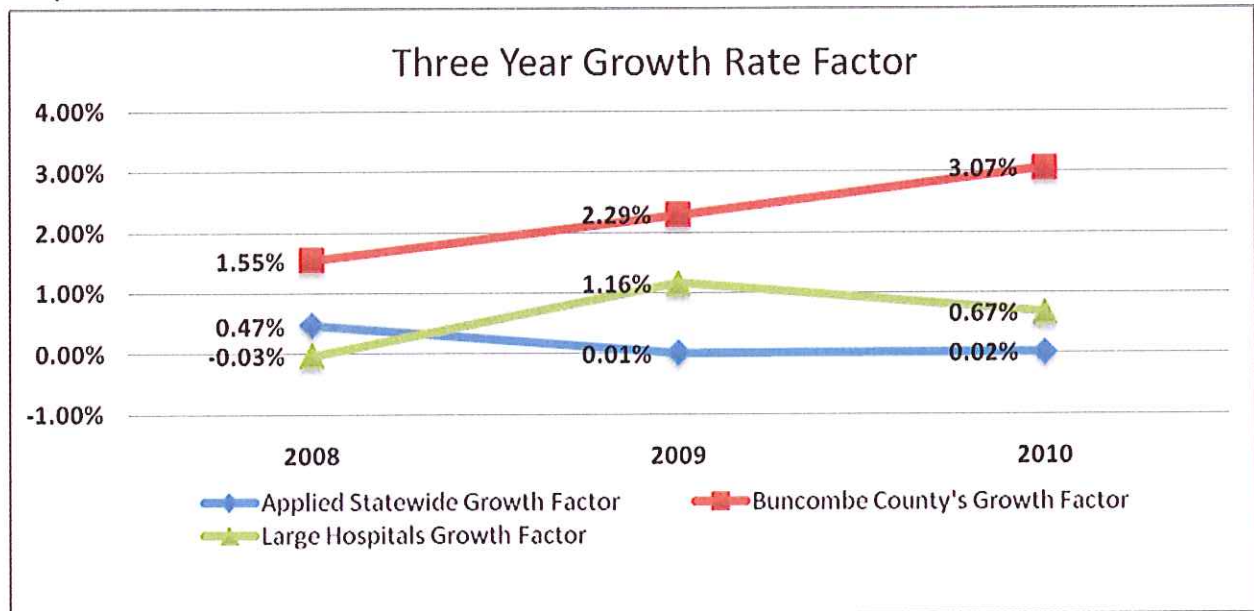
Table 3

| | 2008 Growth Rates – Avg. 3 Yr. 2004-2006 | 2009 Growth Rates – Avg. 3 Yr. 2005-2007 | 2010 Growth Rates- Avg. 3 Yr. 2006-2008 |
|--|---|---|---|
| SMFP Applied Statewide Acute Care Patient Day Factor | 0.47% | 0.01% | 0.02% |
| Buncombe County Acute Care Patient Day Growth Rate Factor | 1.55% | 2.3% | 3.1% |
| Large Hospital's Acute Care Patient Day Growth Rate Factor | 0% | 1.16% | 0.7% |

Source: Table 5A - Historical and Proposed SMFPs

The following graph illustrates the significant difference between actual growth of patient days in Buncombe County and patient day growth rates used to project future bed need in the annual SMFP planning process and the overall large hospital acute care patient day growth rates reflected in the previous table.

Graph 3



Note: Larger Hospital Growth Factor for hospitals with more than 300 licensed acute care beds with the exclusion of teaching hospitals

Source: Table 5A - Historical and Proposed SMFPs

For the past three years, the actual historical patient day growth rates for Mission Hospital are consistently higher. In addition, large community hospitals have an average historical growth

rate higher than that of the applied statewide average patient day growth rates used in the SMFP bed need determinations. The previous graph clearly illustrates that the average patient days for Mission Hospital have consistently grown at a faster rate than the current SMFP's applied statewide growth factor.

In previous SMFP's, the low growth rates have resulted in a surplus of beds in Buncombe County. The proposed 2010 SMFP shows a 9 bed deficit but a 0 bed need determination for Buncombe County. Previously, Mission Hospital has had sufficient bed capacity to work around the slower applied statewide growth rate; however the demand for inpatient care in Mission Hospital's service area has now surpassed the available bed capacity in Buncombe County. Mission struggles on a daily basis to get patients admitted without patient delay.

Mission Hospital has demonstrated the need for an adjusted bed need determination ranging from 9 beds to 91 beds for Buncombe County based on several methodologies. Although Buncombe County's three year average growth rate is much higher than the current applied statewide annual growth rate and calculations based on the actual aggregate acute care patient days from Table 5A result in higher projected bed need, Mission Hospital is requesting that Column K of Table 5a: Acute Care Bed Need Projections be adjusted to reflect a 9 bed acute care 2014 Need Determination.

Mission believes that due to fluctuating economic conditions and the ongoing work of the Acute Care Bed Need Methodology Work Group requesting only the bed need deficit shown in Column J of Table 5A of the *Proposed 2010 SMFP* and omitting Step 8.b. of the current methodology is a more conservative approach to use at this time. Therefore, Mission is petitioning for a 2014 acute care bed need adjustment of 9 beds to meet the critical need for acute care beds in the next year.

Requested adjustment to the 2010 SMFP

Mission Hospital requests an adjusted bed need determination for Buncombe County of 9 beds based on the projected acute care bed need reflected in Column J of Table 5A of the *Proposed 2010 State Medical Facilities Plan*. The table below reflects Mission Hospital's 2008 Thomson Acute Care Patient Days reflected in Table 5A of the *Proposed 2010 State Medical Facilities Plan* projected to 2014 illustrating a bed deficit of 9 beds.

Table 4

| Facility Name | Licensed AC beds | Thomson 2008 Acute Care Days | Six Year Annual Growth Projection 2014 | 2014 Projected Avg. Daily Census (ADC) | 2014 Beds Adjusted for Target Occ. | Proj. 2014 Deficit or Surplus |
|---|------------------|------------------------------|--|--|------------------------------------|-------------------------------|
| Buncombe County at .02% Annual Growth Rate | | | | | | |
| Mission Hospital | 673 | 186,888 | 187,112 | 513 | 682 | 9 |

Source: Proposed 2010 SMFP Table 5A

The resulting impact is a need for 9 additional acute care beds in Buncombe County. The *Proposed 2010 SMFP* shows a need for deficit of 9 acute care beds with a need determination of 0. **Mission Hospital is requesting an Adjusted Bed Need Determination of 9 beds for Buncombe County be reflected in Column K of Table 5A and Table 5B: Acute Care Bed Need Determination of the 2010 SMFP.**

Statement of Adverse Effects

Over the next SMFP bed need six-year planning horizon, the calculated annual population growth rate for Buncombe County of 1.1% is almost 100 times greater than that of the SMFP’s average annual statewide growth rate of 0.02%. Although the current growth rate shows a slight increase, prior SMFP growth rates have been declining even though the population of North Carolina and Buncombe County, in particular, has continued to grow. If additional acute inpatient beds are not available for CON review and approval, continued bottlenecks in inpatient admissions will occur. When this occurs, patients wait for admission in triage rooms, recovery rooms and emergency departments and tertiary patient referrals from other hospitals and physicians are delayed.

In addition, as evidenced in graph 2 on page 2, Mission Hospital operates at peak census level between 6Am and 11AM on Tuesday through Friday. These higher occupancy rates during peak times will result in even greater delays in the bedding of patients admitted through the ED, moving patients to proper inpatient beds, and meeting the requests of referral physicians from other hospitals in the region. In addition, higher occupancy rates will delay placement of patients on the most appropriate units at the beginning of their hospital stay. This could result in inefficient utilization of hospital staff and resources.

ED visits have been increasing at Mission Hospital’s emergency department as they are across North Carolina, see Attachment 4. Over the past two years the admission rate for Mission Hospital’s ED has increased from 20% in 2007 to 22.2% in 2008 impacting the demand for acute

care beds at Mission. In addition, the calculated annual growth rate of the aging population in Buncombe County is 1.7%. Due to the growth in the aging population, Mission Hospital's average length of stay is projected to show an incremental increase from 4.88 to 5.0 by 2018. This increase in the average length of stay will further impact utilization of acute care beds overall and will further increase inpatient emergency admission wait times for inpatient beds.

Table 5

| PROJECTED GROWTH | NC | Buncombe County |
|---------------------|--------|-----------------|
| 2007-2009 >65 | | |
| Total Popul. Growth | 68,185 | 1,772 |
| Total % Growth | 6.20% | 5.30% |
| CAGR | 2.0% | 1.7% |

Without the proposed additional acute care beds, patients will be left waiting to be admitted in triage rooms, recovery rooms and emergency departments. In addition, delay in patient referrals to Mission will increase as a result of not having necessary available acute care beds.

Alternatives

Mission Hospital's patients and medical staff would be faced with holding inpatient admissions in the emergency department until an inpatient bed becomes available, which is less than optimal for the patient, family, and the physicians. During the last four months the average wait time for patients admitted from the ED for admission to an inpatient bed has increased to 4 hours and 32 minutes. This average wait time will continue to increase if beds are not made available. If the average wait time continues to grow the alternative will be for Mission Hospital to request approval from DHSR Licensure and Certification Section to temporarily license 10% more acute beds (10A NCAC 31B.3111). This would result in a short-term solution to the problem. The more lasting solution would be to adjust the patient day growth rate in Buncombe County for the 2010 SMFP. The adjustment will allow for the continued growth in patient days resulting from the population growth in Buncombe County and the surrounding service area and a defined need for additional acute care beds in Buncombe County in the 2010 SMFP.

IV. Duplication of Health Resources

Mission Hospital is the only hospital located in Buncombe County and serves as referral center for 18 counties. Because of Mission Hospital's unique situation, there will not be a duplication of services. A duplication of services suggests that there would be an excess of services within

the market. The data and the narrative provided demonstrates that there a need in Buncombe County for additional acute care beds.

V. Consistency with *SMFP* Basic Principles

The petition is consistent with the provisions of the Basic Principles of the State Medical Facilities Plan.

1. Safety and Quality Basic Principle

The State of North Carolina recognizes the importance of systematic and ongoing improvement in the quality of health services. Providing care in a timely manner is a key component of assuring safety and quality care to the citizens of Buncombe County and western North Carolina. Emerging measures of quality address both favorable clinical outcomes and patient satisfaction, while safety measures focus on the elimination of practices that contribute to avoidable injury or death and the adoption of practices that promote and ensure safety. Providing appropriate care in the appropriate setting works to assure quality care. Mission Hospital participates in a variety of nationally recognized metrics addressing these criteria, including programs at both the federal and state levels. Mission has participated in the North Carolina Hospital Quality Performance Report since initiation and has continually improved quality scores since 2007. The proposed adjusted need determination for Buncombe County is consistent with this basic principle as it will result in the availability of care in an appropriate setting in a timelier manner.

2. Access Basic Principle

Equitable access to timely, clinically appropriate and high quality health care for all the people of North Carolina is a foundation principle for the formulation and application of the North Carolina State Medical Facilities Plan. The formulation and implementation of the North Carolina State Medical Facilities Plan seeks to reduce all of these types of barriers to timely and appropriate access. The first priority is to ameliorate economic barriers and the second priority is to mitigate time and distance barriers. The SMFP is developed annually as a mechanism to assure the availability of necessary health care services to a population. The proposed adjustment will improve access to inpatient services for residents of Buncombe and western North Carolina as previously discussed. Assuring the availability of an acute care inpatient bed promotes access to needed acute care services.

The impact of economic barriers is twofold. First, individuals without insurance, with insufficient insurance, or without sufficient funds to purchase their own healthcare will often require public funding to support access to regulated services. Mission Hospital has long been

recognized as the safety net for patients regardless of income or insurance in western North Carolina. As the tertiary provider for western North Carolina, Mission Hospital has no barriers to care for the uninsured and the underinsured.

3. Value Basic Principle

The SHCC defines health care value as maximum health care benefit per dollar expended. Disparity between demand growth and funding constraints for health care services increases the need for affordability and value in health services. Measurement of the cost component of the value equation is often easier than measurement of benefit. Cost per unit of service is an appropriate metric when comparing providers of like services for like populations. The cost basis for some providers such as Mission Hospital, one of the top ten providers of inpatient Medicaid days in North Carolina, may be inflated by disproportionate care to indigent and underfunded patients.

Measurement of benefit is more challenging. Standardized safety and quality measures, when available, can be important factors in achieving improved value in the provision of health services. Mission Hospital participates in a variety of benchmark programs to compare the use of inpatient and outpatient resources to other large to learn from like hospitals and decrease costs wherever possible.

In addition, if the proposed bed need adjustment for Buncombe County is approved, Mission Hospital will be in a position to implement the additional beds, if CON approval is received, at very low cost in existing space within the current facility.

Summary

Mission Hospital is currently operating at an occupancy rate over 80% which is above the 75.2% target occupancy rate used in the SMFP to encourage efficiency of operation and planning for future acute care bed need. The proposed bed need adjustment for additional acute care beds in Buncombe County is based upon actual historical experience in patient origin, patient discharges, and reasonable assumptions.

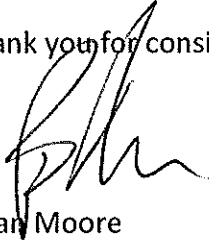
Furthermore, if the proposed Bed Need Adjustment for Buncombe County is approved Mission Hospital will be in a position to implement the additional beds, if CON approval is received, at very low cost in existing space within the current facility.

The Petitioners are requesting an adjustment of need in the SMFP, based upon use of the acute care growth rate determined using Table 5A: Acute Care Bed Need Projections of the annual

SMFP. The Petitioners request that the State Health Coordinating Council adjust the need determination as requested so that the providers can better serve the health care needs of the community. Therefore, the Petitioners specifically request a specific adjustment in the 2010 SMFP approving their request to:

Adjust Table 5A: Acute Care Bed Need Projections and Table 5B: Acute Care Need Determinations for Buncombe County to reflect a need for 9 additional acute care beds in Column K.

Thank you for consideration of the petition,



Brian Moore
Director, Strategic Planning and Public Policy

Target Occupancy Factors: ADC<100 = 150%, ADC 100-200 = 140%, ADC>200 = 133%

| License # | Facility Name | County | Licensed AC Beds | Adjustments for COVID and Previous Need | | Thomson 2007 Acute Care Days | County Growth Rate Multiplier | 6 Years at County GR Annually | 2013 Projected Average Daily Census (ADC) | 2013 Beds Adjusted for Target Occupancy | Projected 2013 Deficit or Surplus ("") | 2013 Need Determination Including Outliers | 2013 Need Determination Excluding Outliers |
|-----------|---|-------------|------------------|---|------|------------------------------|-------------------------------|-------------------------------|---|---|--|--|--|
| | | | | Need | Need | | | | | | | | |
| H0272 | Albama Regional Medical Center | Albama | 182 | 0 | 0 | 43,733 | 1.0167 | 48,305 | 132 | 185 | 3 | 0 | 0 |
| H0274 | Alexander Hospital | Alexander | 25 | 0 | 0 | 0 | -1.1071 | 0 | 0 | 0 | -25 | 0 | 0 |
| H0108 | Allegheny Memorial Hospital | Allegheny | 41 | 0 | 0 | 2,399 | -1.0588 | 0 | 0 | 0 | -41 | 0 | 0 |
| H0082 | Anson Community Hospital | Anson | 52 | 0 | 0 | 5,367 | -1.0248 | 0 | 0 | 0 | -52 | 0 | 0 |
| H0099 | Ashe Memorial Hospital | Ashe | 76 | 0 | 0 | 5,070 | -1.2125 | 0 | 0 | 0 | -76 | 0 | 0 |
| H0037 | Charles A. Cannon, Jr. Memorial Hospital | Avery | 30 | 0 | 0 | 5,965 | -1.1991 | 0 | 0 | 0 | -30 | 0 | 0 |
| H0288 | Berke Memorial Hospital | Berke | 6 | 0 | 0 | 1,566 | 1.0418 | 4,656 | 12 | 19 | 13 | 13 | 0 |
| H0134 | Cape Fear Valley - Bladen County Hospital | Bladen | 48 | 0 | 0 | 4,729 | 1.0235 | 5,045 | 17 | 25 | -22 | 0 | 0 |
| H0036 | Carroll's Medical Center - NorthEast | Buncombe | 673 | 0 | 0 | 182,390 | 1.0554 | 209,672 | 574 | 764 | 91 | 91 | 91 |
| H0061 | Caldwell Memorial Hospital | Cabarrus | 447 | 0 | 0 | 98,475 | 1.0155 | 136,105 | 373 | 496 | 49 | 49 | 49 |
| H0222 | Carteret General Hospital | Caldwell | 110 | 0 | 0 | 15,095 | -1.0310 | 15,559 | 45 | 68 | -42 | 0 | 0 |
| H0007 | Chatham Hospital | Carteret | 135 | 0 | 0 | 28,952 | 1.0438 | 0 | 10 | 15 | -10 | 0 | 0 |
| H0239 | Murphy Medical Center | Chatham | 25 | 0 | 0 | 2,855 | -1.0419 | 3,692 | 0 | 0 | -57 | 0 | 0 |
| H0063 | Chowan Hospital | Cherokee | 57 | 0 | 0 | 8,000 | -1.0337 | 0 | 0 | 0 | -49 | 0 | 0 |
| H0045 | Columbus County Hospital | Chowan | 49 | 0 | 0 | 6,586 | -1.0021 | 0 | 0 | 0 | -154 | 0 | 0 |
| H0201 | Craven Regional Medical Center | Columbus | 154 | 0 | 0 | 25,813 | 1.0006 | 76,827 | 215 | 287 | -20 | 0 | 0 |
| H0213 | Cape Fear Valley Medical Center | Craven | 270 | 0 | 0 | 78,365 | -1.0052 | 0 | 0 | 0 | -531 | 0 | 0 |
| H0171 | The Outer Banks Hospital | Cumberland | 19 | 2 | 2 | 3,644 | -1.0828 | 0 | 0 | 0 | -21 | 0 | 0 |
| H0166 | Duplin General Hospital | Dare | 81 | 0 | 0 | 1,264 | 1.0360 | 1,563 | 4 | 6 | -75 | 0 | 0 |
| H0258 | Heritage Hospital | Davie | 61 | 0 | 0 | 11,459 | -1.1369 | 0 | 0 | 0 | -61 | 0 | 0 |
| H0261 | Franklin Regional Medical Center | Edgecombe | 101 | 0 | 0 | 14,054 | 1.0391 | 17,695 | 48 | 73 | -26 | 0 | 0 |
| H0105 | Gaston Memorial Hospital | Franklin | 70 | 0 | 0 | 13,645 | 1.0960 | 23,647 | 65 | 97 | 27 | 27 | 0 |
| H0098 | Granville Medical Center | Gaston | 372 | 0 | 0 | 87,990 | -1.0193 | 0 | 0 | 0 | -372 | 0 | 0 |
| H0025 | Haywood Regional Medical Center | Granville | 153 | 0 | 0 | 7,280 | 1.0045 | 21,998 | 60 | 90 | -62 | 0 | 0 |
| H0001 | Roanoke-Chowan Hospital | Haywood | 86 | 0 | 0 | 15,220 | -1.0263 | 0 | 0 | 0 | -86 | 0 | 0 |
| H0087 | Harris Regional Hospital | Hertford | 36 | 0 | 0 | 19,445 | 1.0229 | 22,271 | 61 | 92 | 6 | 0 | 0 |
| H0151 | Johnston Memorial Hospital | Jackson | 157 | 0 | 22 | 38,576 | 1.0504 | 61,341 | 168 | 235 | 56 | 56 | 56 |
| H0043 | Central Carolina Hospital | Lee | 127 | 0 | 0 | 43,336 | -1.0461 | 0 | 0 | 0 | -127 | 0 | 0 |
| H0243 | Lenoir Memorial Hospital | Lenoir | 218 | 0 | 0 | 15,624 | -1.0021 | 0 | 0 | 0 | -101 | 0 | 0 |
| H0025 | Carroll's Medical Center - Lincoln | Lincoln | 101 | 0 | 0 | 7,894 | 1.0135 | 8,554 | 23 | 35 | -14 | 0 | 0 |
| H0078 | Martin General Hospital | Martin | 49 | 0 | 0 | 7,307 | -1.0804 | 0 | 0 | 0 | -65 | 0 | 0 |
| H0097 | The McDowell Hospital | McDowell | 65 | 0 | 0 | 6,410 | -1.0378 | 0 | 0 | 0 | -46 | 0 | 0 |
| H0169 | Blue Ridge Regional Hospital | Mitchell | 46 | 0 | 0 | 8,410 | -1.1327 | 0 | 0 | 0 | -37 | 0 | 0 |
| H0003 | FirstHealth Montgomery Memorial Hospital | Montgomery | 37 | 0 | 0 | 1,568 | -1.0117 | 0 | 0 | 0 | -320 | 0 | 0 |
| H0100 | FirstHealth Moore Regional Hospital | Moore | 297 | 0 | 23 | 78,816 | -1.0107 | 0 | 0 | 0 | -270 | 0 | 0 |
| H0226 | Nash General Hospital | Nash | 270 | 0 | 0 | 58,151 | -1.0107 | 0 | 0 | 0 | -647 | 0 | 0 |
| H0048 | New Hanover Regional Medical Center | New Hanover | 647 | 0 | 0 | 147,013 | -1.0137 | 39,377 | 108 | 151 | -11 | 0 | 0 |
| H0157 | Onslow Memorial Hospital | Onslow | 162 | 0 | 0 | 32,776 | 1.0343 | 236,547 | 648 | 862 | 169 | 169 | 169 |
| H0054 | Albemarle Hospital | Orange | 621 | 0 | 72 | 193,172 | -1.0638 | 0 | 0 | 0 | -182 | 0 | 0 |
| H0115 | Pender Memorial Hospital | Pasquotank | 182 | 0 | 0 | 51,121 | -1.0279 | 0 | 0 | 0 | -43 | 0 | 0 |
| H0066 | Person Memorial Hospital | Pender | 43 | 0 | 0 | 3,603 | -1.0187 | 0 | 0 | 0 | -50 | 0 | 0 |
| H0104 | Pitt County Memorial Hospital | Person | 50 | 0 | 0 | 11,868 | 1.0092 | 207,739 | 569 | 757 | 23 | 23 | 23 |
| H0079 | St. Luke's Hospital | Pitt | 628 | 0 | 106 | 3,493 | -1.1171 | 0 | 0 | 0 | -45 | 0 | 0 |
| H0013 | Randolph Hospital | Randolph | 145 | 0 | 0 | 24,464 | 1.0019 | 24,740 | 88 | 102 | -43 | 0 | 0 |
| H0064 | Southwestern Regional Medical Center | Robeson | 292 | 0 | 0 | 61,776 | -1.0352 | 0 | 0 | 0 | -292 | 0 | 0 |
| H0040 | Rowan Regional Medical Center | Rowan | 223 | 0 | 0 | 35,958 | -1.0356 | 0 | 0 | 0 | -223 | 0 | 0 |

| | | | | | | | | | | | | |
|---|--|-----------------|-------|-----|---------|---------|---------|-----|-----|-------|------------|------------|
| H0039 | Rutherford Hospital | Rutherford | 129 | 0 | 12,989 | 1,0044 | 19,496 | 53 | 80 | -49 | 0 | 0 |
| H0067 | Sampson Regional Medical Center | Sampson | 116 | 0 | 15,749 | -1,0288 | 0 | 0 | 0 | -116 | 0 | 0 |
| H0107 | Scotland Memorial Hospital | Scotland | 97 | 21 | 24,557 | -1,0289 | 0 | 0 | 0 | -118 | 0 | 0 |
| H0008 | Stanly Regional Medical Center | Stanly | 97 | 0 | 14,763 | -1,0829 | 0 | 0 | 0 | -97 | 0 | 0 |
| H0165 | Stokes-Reynolds Memorial Hospital | Stokes | 53 | 0 | 1,365 | -1,2290 | 0 | 0 | 0 | -53 | 0 | 0 |
| H0069 | Swain County Hospital | Swain | 48 | 0 | 1,645 | -1,0144 | 0 | 0 | 0 | -48 | 0 | 0 |
| H0111 | Transylvania Community Hospital | Transylvania | 42 | 0 | 6,406 | 1,07106 | 6,826 | 19 | 28 | -14 | 0 | 0 |
| H0050 | Transylvania Community Hospital - Union | Union | 157 | 0 | 36,629 | 1,0508 | 49,318 | 135 | 189 | 32 | 32 | 32 |
| H0257 | Martha Parham Hospital | Vance | 91 | 0 | 20,106 | -1,0081 | 0 | 0 | 0 | -91 | 0 | 0 |
| H0006 | Washington County Hospital | Washington | 49 | -37 | 2,140 | -1,0967 | 0 | 0 | 0 | -12 | 0 | 0 |
| H0257 | Wayne Memorial Hospital | Wayne | 255 | 0 | 59,390 | -1,0063 | 0 | 0 | 0 | -255 | 0 | 0 |
| H0153 | Wilkes Regional Medical Center | Wilkes | 120 | 0 | 17,707 | -1,0161 | 0 | 0 | 0 | -120 | 0 | 0 |
| H0210 | Wilkes Memorial Center | Wilkes | 294 | -96 | 33,691 | -1,0035 | 0 | 0 | 0 | -198 | 0 | 0 |
| H0155 | Wilson Memorial Hospital | Yadkin | 22 | 0 | 1,002 | 1,0761 | 1,556 | 4 | 6 | -16 | 0 | 0 |
| Total | | | | | | | | | | | 461 | 420 |
| Counties with More than One Hospital | | | | | | | | | | | | |
| H0188 | Beaufort County Hospital | Beaufort | 120 | 0 | 10,694 | -1,0286 | 0 | 0 | 0 | -120 | 0 | 0 |
| H0002 | Pungo District Hospital Corporation | Beaufort | 39 | 0 | 2,369 | -1,0266 | 0 | 0 | 0 | -39 | 0 | 0 |
| H0250 | Brunswick Community Hospital | Brunswick | 60 | 14 | 11,205 | -1,0302 | 0 | 0 | 0 | -74 | 0 | 0 |
| H0150 | J. Arthur Dasher Memorial Hospital | Brunswick | 36 | 0 | 4,696 | -1,0302 | 0 | 0 | 0 | -36 | 0 | 0 |
| H0062 | Grace Hospital | Burke | 162 | 0 | 20,151 | -1,0374 | 0 | 0 | 0 | -162 | 0 | 0 |
| H0091 | Valdese General Hospital | Burke | 131 | 0 | 12,151 | -1,0374 | 0 | 0 | 0 | -131 | 0 | 0 |
| H0223 | Catawba Valley Medical Center | Burke Total | 293 | 0 | 39,233 | -1,0109 | 0 | 0 | 0 | -200 | 0 | 0 |
| H0053 | Fye Regional Medical Center | Catawba | 209 | 0 | 48,577 | -1,0109 | 0 | 0 | 0 | -209 | 0 | 0 |
| H0024 | Cleveland Regional Medical Center | Catawba Total | 409 | 0 | 37,094 | -1,0542 | 0 | 0 | 0 | -241 | 0 | 0 |
| H0236 | Crawley Memorial Hospital (CON to convert 41 AC beds to LTCH beds and 10 AC beds to nursing beds issued 7.14.08.) | Cleveland | 50 | -50 | 9 | -1,0542 | 0 | 0 | 0 | 0 | 0 | 0 |
| H0113 | Kings Mountain Hospital | Cleveland | 72 | 0 | 7,171 | -1,0542 | 0 | 0 | 0 | -72 | 0 | 0 |
| H0027 | Lexington Memorial Hospital | Cleveland Total | 363 | -50 | 11,661 | 1,0111 | 12,457 | 34 | 51 | -43 | 0 | 0 |
| H0112 | Thomasville Medical Center | Davidson | 123 | 0 | 13,498 | 1,0111 | 14,419 | 40 | 59 | -64 | 0 | 0 |
| H0015 | Duke University Hospital | Davidson Total | 217 | 0 | 225,196 | -1,0028 | 0 | 0 | 0 | -924 | 0 | 0 |
| H0233 | Durham Regional Hospital | Durham | 316 | 0 | 63,487 | -1,0028 | 0 | 0 | 0 | -316 | 0 | 0 |
| H0075 | Duke/Durham Regional Totals | Durham | 1,240 | 0 | 2,505 | -1,0028 | 0 | 0 | 0 | -1240 | 0 | 0 |
| H0209 | Forsyth Medical Center | Durham Total | 1,258 | 0 | 208,327 | 1,0075 | 217,926 | 597 | 794 | 4 | 4 | 4 |
| H0229 | Medical Park Hospital | Forsyth | 22 | 0 | 5,684 | 1,0075 | 5,946 | 16 | 24 | 2 | 2 | 2 |
| H0011 | Forsyth/Medical Park Totals | Forsyth | 773 | 39 | 213,567 | 1,0075 | 223,407 | 612 | 814 | 25 | 25 | 25 |
| H0052 | High Point Regional Health System | Forsyth Total | 1,562 | 65 | 72,495 | -1,0091 | 0 | 0 | 0 | -307 | 6 | 6 |
| H0159 | Moses Cone Health System | Guilford | 818 | -41 | 192,620 | -1,0091 | 0 | 0 | 0 | -777 | 0 | 0 |
| H0230 | Halifax Regional Medical Center | Guilford Total | 1,109 | -25 | 33,124 | -1,0079 | 0 | 0 | 0 | -186 | 0 | 0 |

| | | | | | | | | | | | | |
|--------|---|-------------------|-------|------|-----------|---------|-----------|-------|-------|-------|------|-----|
| H0004 | Our Community Hospital | Halifax | 20 | 0 | 139 | -1,0079 | 0 | 0 | 0 | 0 | -20 | 0 |
| | | Halifax Total | 206 | 0 | 26,675 | -1,0138 | 0 | 0 | 0 | 0 | -101 | 0 |
| H0224 | Betsy Johnson Regional Hospital | Harnett | 101 | 0 | 0 | -1,0138 | 0 | 0 | 0 | 0 | -50 | 0 |
| | Harnett Health System Central Campus | Harnett | 0 | 50 | 0 | -1,0138 | 0 | 0 | 0 | 0 | -151 | 0 |
| N/A | Betsy Johnson/Harnett Health System Totals | Harnett | 101 | 50 | 0 | -1,0138 | 0 | 0 | 0 | 0 | -34 | 0 |
| H0080 | Good Hope Hospital (closed effective 4/1/106) | Harnett | 0 | 34 | 0 | -1,0138 | 0 | 0 | 0 | 0 | -34 | 0 |
| | | Harnett Total | 202 | 134 | 0 | -1,0051 | 0 | 0 | 0 | 0 | -193 | 0 |
| H0161 | Margaret R. Pardee Memorial Hospital | Henderson | 193 | 0 | 26,797 | -1,0051 | 0 | 0 | 0 | 0 | -62 | 0 |
| H0019 | Park Ridge Hospital | Henderson | 62 | 0 | 13,397 | -1,0051 | 0 | 0 | 0 | 0 | -62 | 0 |
| | | Henderson Total | 255 | 0 | 40,194 | -1,0051 | 0 | 0 | 0 | 0 | -124 | 0 |
| H0248 | Davis Regional Medical Center | Iredell | 120 | -18 | 16,644 | -1,0279 | 0 | 0 | 0 | 0 | -102 | 0 |
| H0259 | Lake Norman Regional Medical Center | Iredell | 105 | 18 | 27,757 | -1,0279 | 0 | 0 | 0 | 0 | -123 | 0 |
| Totals | Davis Regional/Lake Norman Totals | Iredell | 225 | 0 | 44,401 | -1,0279 | 0 | 0 | 0 | 0 | -225 | 0 |
| H0164 | Iredell Memorial Hospital | Iredell | 199 | 0 | 41,817 | -1,0279 | 0 | 0 | 0 | 0 | -199 | 0 |
| | | Iredell Total | 424 | 0 | 86,218 | -1,0279 | 0 | 0 | 0 | 0 | -394 | 0 |
| H0034 | Angel Medical Center | Macon | 59 | 0 | 5,655 | 1,0113 | 6,048 | 17 | 25 | 3 | -34 | 0 |
| H0193 | Highlands-Cashiers Hospital | Macon | 24 | 0 | 756 | 1,0113 | 909 | 2 | 3 | 0 | -21 | 0 |
| | | Macon Total | 83 | 0 | 6,411 | 1,0113 | 15,957 | 19 | 28 | 3 | -55 | 0 |
| H0042 | Carollinas Medical Center - Mercy & Pineville | Mecklenburg | 294 | 35 | 56,294 | 1,0267 | 65,944 | 181 | 253 | 9 | -77 | 0 |
| H0255 | Carollinas Medical Center - University | Mecklenburg | 130 | -36 | 21,378 | 1,0267 | 25,043 | 69 | 103 | 9 | 9 | 0 |
| H0071 | Carollinas Medical Center / Center for Mental & Mecklenburg | Mecklenburg | 795 | 0 | 228,343 | 1,0267 | 267,488 | 733 | 975 | 180 | 112 | 0 |
| Totals | Carollinas Medical Center Totals | Mecklenburg | 1,219 | 0 | 495,995 | 1,0267 | 558,475 | 957 | 1,231 | 288 | 191 | 0 |
| H0010 | Presbyterian Hospital | Mecklenburg | 463 | 76 | 159,139 | 1,0267 | 186,419 | 511 | 679 | 140 | 140 | 0 |
| H0282 | Presbyterian Hospital Huntersville | Mecklenburg | 50 | 0 | 15,993 | 1,0267 | 18,735 | 51 | 77 | 27 | 27 | 0 |
| H0270 | Presbyterian Hospital Matthews | Mecklenburg | 102 | 0 | 27,408 | 1,0267 | 32,106 | 88 | 132 | 30 | 30 | 0 |
| N/A | Presbyterian Hospital Mint Hill | Mecklenburg | 0 | 50 | 0 | 1,0267 | 0 | 0 | 0 | 0 | -50 | 0 |
| H0251 | Presbyterian Orthopaedic Hospital | Mecklenburg | 140 | -126 | 12,915 | 1,0267 | 15,129 | 41 | 62 | 48 | 48 | 0 |
| Totals | Presbyterian Hospital Totals | Mecklenburg | 755 | 0 | 205,555 | 1,0267 | 238,231 | 731 | 951 | 195 | 195 | 0 |
| | 2008 SMLFP Need Determination | Mecklenburg | 27 | 27 | 0 | 1,0267 | 0 | 0 | 0 | 0 | 27 | 27 |
| | | Mecklenburg Total | 1,974 | 27 | 701,740 | 1,0267 | 803,706 | 1,688 | 2,182 | 483 | 483 | 280 |
| H0158 | Fritchhealth Richmond Memorial Hospital | Richmond | 99 | 0 | 14,171 | 1,0044 | 14,548 | 40 | 60 | 60 | -39 | 0 |
| H0265 | Sandhills Regional Medical Center | Richmond | 54 | 6 | 13,227 | 1,0044 | 13,578 | 37 | 56 | 56 | -4 | 0 |
| | | Richmond Total | 153 | 6 | 27,398 | 1,0044 | 28,126 | 77 | 116 | 116 | -43 | 0 |
| H0023 | Annie Penn Hospital | Rockingham | 110 | 0 | 16,465 | 1,0033 | 16,791 | 46 | 69 | 69 | -41 | 0 |
| H0072 | Warehead Memorial Hospital | Rockingham | 108 | 0 | 24,150 | 1,0033 | 24,628 | 67 | 101 | 101 | -7 | 0 |
| | | Rockingham Total | 218 | 0 | 40,615 | 1,0033 | 41,419 | 113 | 170 | 170 | -48 | 0 |
| H0049 | Hugh Chatham Memorial Hospital | Surry | 81 | 0 | 16,475 | 1,0570 | 22,971 | 83 | 94 | 94 | 13 | 0 |
| H0184 | Northern Hospital of Surry County | Surry | 100 | 0 | 16,678 | 1,0570 | 23,254 | 64 | 96 | 96 | -4 | 0 |
| | | Surry Total | 181 | 0 | 33,153 | 1,0570 | 46,225 | 147 | 190 | 190 | 9 | 0 |
| H0238 | Duke Health Raleigh Hospital | Wake | 186 | 0 | 23,185 | 1,0164 | 25,556 | 70 | 105 | 105 | -31 | 0 |
| H0065 | Rex Hospital | Wake | 388 | 45 | 101,520 | 1,0164 | 111,901 | 307 | 408 | 408 | -25 | 0 |
| H0276 | WakeMed Cary Hospital | Wake | 156 | 0 | 36,625 | 1,0164 | 40,370 | 111 | 155 | 155 | -1 | 0 |
| H0199 | WakeMed Raleigh Campus | Wake | 515 | 60 | 175,351 | 1,0164 | 193,282 | 530 | 704 | 704 | 129 | 0 |
| Totals | WakeMed Totals | Wake | 671 | 60 | 335,061 | 1,0164 | 370,108 | 1,241 | 1,668 | 1,668 | 128 | 0 |
| | 2008 SMLFP Need Determination | Wake | 41 | 41 | 0 | 1,0164 | 0 | 0 | 0 | 0 | 41 | 41 |
| | | Wake Total | 1,245 | 146 | 335,061 | 1,0164 | 370,108 | 1,241 | 1,668 | 1,668 | 169 | 87 |
| H0160 | Blowing Rock Hospital | Watauga | 28 | 0 | 683 | -1,0408 | 0 | 0 | 0 | 0 | -28 | 0 |
| H0077 | Watauga Medical Center | Watauga | 117 | 0 | 22,661 | -1,0408 | 0 | 0 | 0 | 0 | -117 | 0 |
| | | Watauga Total | 145 | 0 | 23,344 | -1,0408 | 0 | 0 | 0 | 0 | -145 | 0 |
| Total | Grand Total All Hospitals | | 833 | 373 | 3,723,793 | | 4,196,891 | 1,733 | 2,206 | 2,206 | 793 | 373 |

Attachment B

Table 5A: Acute Care Bed Need Projections
(2008 Utilization Data from Thomson as compiled by the Cecil B. Sheps Center for Health Services Research)

| A | B | C | D | E | F | G | H | I | J | K | | | |
|----------------|---|------------|--------------------------|-------------------------------------|------------------------------|---------------------------------------|---|---|--|-------------------------|-------------------|--------------------------------------|-------------------------------------|
| License Number | Facility Name | County | Licensed Acute Care Beds | Adjustments for CONs/ Previous Need | Thomson 2008 Acute Care Days | 6 Years Growth Using .02% Growth Rate | 2014 Projected Average Daily Census (ADC) | 2014 Beds Adjusted for Target Occupancy | Projected 2014 Deficit or Surplus ("") | 2014 Need Determination | 2008 License Days | 2008 License Days Minus Thomson Days | Percent Difference Thomson/ License |
| H0272 | Alamance Regional Medical Center | Alamance | 182 | 0 | 45,843 | 45,898 | 126 | 176 | -6 | 0 | 46,346 | 503 | 1.1% |
| H0274 | Alexander Hospital | Alexander | 25 | 0 | 0 | 0 | 0 | 0 | -25 | 0 | 0 | 0 | 0.0% |
| H0108 | Alleghany Memorial Hospital | Alleghany | 41 | 0 | 2,785 | 2,788 | 8 | 11 | -30 | 0 | 2,824 | 39 | 1.4% |
| H0082 | Anson Community Hospital | Anson | 52 | 0 | 4,152 | 4,157 | 11 | 17 | -35 | 0 | 4,947 | 795 | 19.1% |
| H0099 | Ashe Memorial Hospital | Ashe | 76 | 0 | 5,182 | 5,188 | 14 | 21 | -55 | 0 | 5,193 | 11 | 0.2% |
| H0037 | Charles A. Cannon, Jr. Memorial Hospital | Avery | 30 | 0 | 6,433 | 6,441 | 18 | 26 | -4 | 0 | 5,713 | -720 | -11.2% |
| H0268 | Bertie Memorial Hospital | Bertie | 6 | 0 | 1,578 | 1,580 | 4 | 6 | 0 | 0 | 1,570 | -8 | -0.5% |
| H0154 | Cape Fear Valley - Bladen County Hospital | Bladen | 48 | 0 | 3,794 | 3,799 | 10 | 16 | -32 | 0 | 3,809 | 15 | 0.4% |
| H0036 | Mission Hospital | Burcombe | 673 | 0 | 186,888 | 187,112 | 513 | 682 | 9 | 0 | 186,795 | -93 | 0.0% |
| H0031 | Carolina's Medical Center - NorthEast | Cabarrus | 447 | 0 | 105,542 | 105,669 | 290 | 385 | -62 | 0 | 105,103 | -439 | -0.4% |
| H0061 | Caldwell Memorial Hospital | Caldwell | 110 | 0 | 17,505 | 17,526 | 48 | 72 | -38 | 0 | 19,712 | 2,207 | 12.6% |
| H0222 | Carteret General Hospital | Carteret | 135 | 0 | 27,483 | 27,516 | 75 | 113 | -22 | 0 | 27,761 | 278 | 1.0% |
| H0007 | Chatham Hospital | Chatham | 25 | 0 | 3,341 | 3,345 | 9 | 14 | -11 | 0 | 3,280 | -61 | -1.8% |
| H0229 | Murphy Medical Center | Cherokee | 57 | 0 | 8,473 | 8,483 | 23 | 35 | -22 | 0 | 8,673 | 200 | 2.4% |
| H0063 | Chowan Hospital | Chowan | 49 | 0 | 6,988 | 6,996 | 19 | 29 | -20 | 0 | 7,003 | 15 | 0.2% |
| H0045 | Columbus County Hospital | Columbus | 154 | 0 | 18,581 | 18,603 | 51 | 76 | -78 | 0 | 24,319 | 5,738 | 30.9% |
| H0201 | CarolinaEast Medical Center | Craven | 270 | 37 | 77,706 | 77,799 | 213 | 283 | -24 | 0 | 77,163 | -543 | -0.7% |
| H0213 | Cape Fear Valley Medical Center | Cumberland | 487 | 44 | 145,017 | 145,191 | 388 | 529 | -2 | 0 | 144,594 | -463 | -0.3% |
| H0273 | The Outer Banks Hospital | Dare | 21 | 0 | 3,634 | 3,638 | 10 | 15 | -6 | 0 | 3,663 | 29 | 0.8% |
| H0171 | Dave County Hospital | Dave | 81 | 0 | 1,420 | 1,422 | 4 | 6 | -75 | 0 | 1,422 | 2 | 0.1% |
| H0166 | Duplin General Hospital | Duplin | 61 | 0 | 11,401 | 11,415 | 31 | 47 | -14 | 0 | 10,794 | -607 | -5.3% |
| H0258 | Heritage Hospital | Edgecombe | 101 | 0 | 15,631 | 15,650 | 43 | 64 | -37 | 0 | 15,629 | -2 | 0.0% |
| H0281 | Franklin Regional Medical Center | Franklin | 70 | 0 | 11,342 | 11,356 | 31 | 47 | -23 | 0 | 11,292 | -110 | -1.0% |
| H0105 | Gaston Memorial Hospital | Gaston | 372 | 0 | 81,162 | 81,259 | 223 | 296 | -76 | 0 | 81,280 | 118 | 0.1% |
| H0098 | Granville Medical Center | Granville | 62 | 0 | 8,077 | 8,087 | 22 | 33 | -29 | 0 | 8,192 | 115 | 1.4% |
| H0025 | Haywood Regional Medical Center | Haywood | 153 | 0 | 14,217 | 14,234 | 39 | 58 | -95 | 0 | 15,774 | 1,557 | 11.0% |
| H0001 | Roanoke-Chowan Hospital | Hertford | 86 | 0 | 14,333 | 14,340 | 39 | 59 | -27 | 0 | 14,288 | -35 | -0.2% |
| H0087 | Harris Regional Hospital | Jackson | 95 | 0 | 18,293 | 18,315 | 50 | 75 | -11 | 0 | 18,295 | 2 | 0.0% |
| H0151 | Johnston Memorial Hospital | Johnston | 157 | 22 | 37,982 | 37,989 | 104 | 146 | -33 | 0 | 38,141 | 189 | 0.5% |
| H0243 | Central Carolina Hospital | Lee | 127 | 0 | 19,697 | 19,711 | 54 | 81 | -46 | 0 | 20,332 | 645 | 3.3% |
| H0043 | Lenoir Memorial Hospital | Lenoir | 218 | 0 | 46,226 | 46,281 | 127 | 178 | -40 | 0 | 47,588 | 1,362 | 2.9% |
| H0025 | Carolina's Medical Center - Lincoln | Lincoln | 101 | 0 | 15,253 | 15,271 | 42 | 63 | -38 | 0 | 15,500 | 247 | 1.6% |
| H0078 | Martin General Hospital | Martin | 49 | 0 | 7,965 | 7,975 | 22 | 33 | -16 | 0 | 8,346 | 381 | 4.8% |
| H0097 | The McDowell Hospital | McDowell | 65 | 0 | 6,525 | 6,533 | 18 | 27 | -38 | 0 | 6,696 | 171 | 2.6% |

Projections based on Growth Factor at .02% per year for the next 6 years.
Target Occupancy Factors: ADC<100=150%, ADC 100-200=140%, ADC>200=133%.
(ADC=Average Daily Census)

Table 5A: Acute Care Bed Need Projections
 (2008 Utilization Data from Thomson as compiled by the Cecil B. Sheps Center for Health Services Research)

| A | B | C | D | E | F | G | H | I | J | K | | | |
|----------------|--|--------------|--------------------------|-------------------------------------|------------------------------|---------------------------------------|---|---|--|-------------------------|---------------------|---|---------------------------------------|
| License Number | Facility Name | County | Licensed Acute Care Beds | Adjustments for CONS/ Previous Need | Thomson 2008 Acute Care Days | 6 Years Growth Using .02% Growth Rate | 2014 Projected Average Daily Census (ADC) | 2014 Beds Adjusted for Target Occupancy | Projected 2014 Deficit or Surplus ("") | 2014 Need Determination | 2008 Licensure Days | 2008 Licensure Days Minus 2008 Thomson Days | Percent Difference Thomson/ Licensure |
| H0159 | Blue Ridge Regional Hospital | Mitchell | 46 | 0 | 6,568 | 6,576 | 18 | 27 | -19 | 0 | 6,594 | 26 | 0.4% |
| H0003 | FirstHealth Montgomery Memorial Hospital | Montgomery | 37 | 0 | 1,835 | 1,837 | 5 | 8 | -29 | 0 | 1,850 | 15 | 0.8% |
| H0100 | FirstHealth Moore Regional Hospital | Moore | 297 | 23 | 73,264 | 73,352 | 201 | 267 | -53 | 0 | 76,079 | 2,815 | 3.8% |
| H0228 | Nash General Hospital | Nash | 270 | 0 | 56,687 | 56,755 | 155 | 218 | -52 | 0 | 56,671 | -16 | 0.0% |
| H0221 | New Hanover Regional Medical Center | New Hanover | 647 | 0 | 139,307 | 139,474 | 382 | 508 | -139 | 0 | 139,437 | 130 | 0.1% |
| H0048 | Onslow Memorial Hospital | Onslow | 162 | 0 | 33,350 | 33,390 | 91 | 137 | -25 | 0 | 32,714 | -636 | -1.9% |
| H0157 | University of North Carolina Hospitals | Orange | 621 | 72 | 199,848 | 200,088 | 548 | 729 | 36 | 36 | 194,948 | -4,900 | -2.5% |
| H0054 | Albermarle Hospital | Pasquotank | 182 | 0 | 27,437 | 27,470 | 75 | 113 | -69 | 0 | 27,472 | 35 | 0.1% |
| H0115 | Pender Memorial Hospital | Pender | 43 | 0 | 5,647 | 5,654 | 15 | 23 | -20 | 0 | 3,155 | -2,492 | -44.1% |
| H0065 | Person Memorial Hospital | Person | 50 | 0 | 9,717 | 9,729 | 27 | 40 | -10 | 0 | 10,914 | 1,197 | 12.2% |
| H0104 | Pitt County Memorial Hospital | Pitt | 667 | 67 | 197,218 | 197,455 | 541 | 719 | -15 | 0 | 198,558 | 1,340 | 0.7% |
| H0079 | St. Luke's Hospital | Polk | 45 | 0 | 3,521 | 3,525 | 10 | 14 | -31 | 0 | 3,540 | 19 | 0.5% |
| H0013 | Randolph Regional Hospital | Randolph | 145 | 0 | 27,815 | 27,815 | 76 | 114 | -31 | 0 | 28,136 | -1,646 | -5.9% |
| H0094 | Southwestern Regional Medical Center | Robeson | 292 | 0 | 60,095 | 60,157 | 165 | 231 | -61 | 0 | 57,809 | -2,276 | -3.9% |
| H0040 | Rowan Regional Medical Center | Rowan | 223 | 0 | 34,559 | 34,600 | 95 | 142 | -81 | 0 | 35,071 | 512 | 1.5% |
| H0039 | Rutherford Hospital | Rutherford | 129 | 0 | 17,359 | 17,380 | 48 | 71 | -58 | 0 | 19,161 | 1,802 | 10.4% |
| H0067 | Sampson Regional Medical Center | Sampson | 116 | 0 | 12,653 | 12,668 | 35 | 52 | -64 | 0 | 11,695 | -958 | -7.6% |
| H0107 | Scotland Memorial Hospital | Scotland | 97 | 21 | 24,706 | 24,736 | 68 | 102 | -16 | 0 | 24,714 | 8 | 0.0% |
| H0008 | Stanly Regional Medical Center | Stanly | 97 | 0 | 14,101 | 14,118 | 39 | 58 | -39 | 0 | 14,279 | 178 | 1.3% |
| H0165 | Stokes-Reynolds Memorial Hospital | Stokes | 53 | 0 | 842 | 843 | 2 | 3 | -50 | 0 | 822 | -20 | -2.4% |
| H0069 | Swain County Hospital | Swain | 48 | 0 | 1,607 | 1,609 | 4 | 7 | -41 | 0 | 1,606 | -1 | -0.1% |
| H0111 | Transylvania Community Hospital | Transylvania | 42 | 0 | 5,829 | 5,836 | 16 | 24 | -18 | 0 | 5,874 | 45 | 0.8% |
| H0050 | Carolinas Medical Center - Union | Union | 157 | 0 | 40,362 | 40,410 | 111 | 155 | -2 | 0 | 39,616 | -746 | -1.9% |
| H0267 | María Parham Hospital | Vance | 91 | 0 | 19,892 | 19,916 | 55 | 82 | -9 | 0 | 19,944 | -48 | -0.2% |
| H0006 | Washington County Hospital | Washington | 49 | -37 | 1,849 | 1,851 | 5 | 8 | -4 | 0 | 1,853 | 4 | 0.2% |
| H0257 | Wayne Memorial Hospital | Wayne | 255 | 0 | 60,022 | 60,094 | 185 | 230 | -25 | 0 | 61,403 | 1,381 | 2.3% |
| H0153 | Wilkes Regional Medical Center | Wilkes | 120 | 0 | 16,184 | 16,203 | 44 | 67 | -53 | 0 | 16,318 | 134 | 0.8% |
| H0210 | Wilson Medical Center | Wilson | 294 | -96 | 34,631 | 34,673 | 95 | 142 | -56 | 0 | 34,948 | 317 | 0.9% |
| H0155 | Hoos Memorial Hospital | Yadkin | 22 | 0 | 1,069 | 1,070 | 3 | 4 | -18 | 0 | 834 | -235 | -22.0% |

Projections based on Growth Factor at .02% per year for the next 6 years.
 Target Occupancy Factors: ADC<100=150%, ADC 100-200=140%, ADC>200=133%.
 (ADC=Average Daily Census)

Table 5A: Acute Care Bed Need Projections
 (2008 Utilization Data from Thomson as compiled by the Cecil B. Sheps Center for Health Services Research)

| A | B | C | D | E | F | G | H | I | J | K | | | |
|---|---|-----------------|--------------------------|-------------------------------------|------------------------------|---------------------------------------|---|---|--|-------------------------|-------------------|---|-------------------------------------|
| Counties with one hospital shown first, followed by counties with more than one hospital. | | | | | | | | | | | | | |
| License Number | Facility Name | County | Licensed Acute Care Beds | Adjustments for CONS/ Previous Need | Thomson 2008 Acute Care Days | 6 Years Growth Using .02% Growth Rate | 2014 Projected Average Daily Census (ADC) | 2014 Beds Adjusted for Target Occupancy | Projected 2014 Deficit or Surplus ("") | 2014 Need Determination | 2008 License Days | 2008 License Days Minus 2008 Thomson Days | Percent Difference Thomson/ License |
| H0138 | Beaufort County Hospital | Beaufort | 120 | 0 | 7,987 | 7,997 | 22 | 33 | -37 | | 11,509 | 3,522 | 44.1% |
| H0002 | Pungo District Hospital Corporation | Beaufort | 159 | 0 | 2,259 | 2,262 | 6 | 9 | -30 | | 2,283 | 24 | 1.1% |
| H0250 | Brunswick Community Hospital | Brunswick | 60 | 14 | 11,513 | 11,527 | 32 | 47 | -27 | | 11,545 | 32 | 0.3% |
| H0150 | J. Arthur Doshier Memorial Hospital | Brunswick | 36 | 0 | 4,630 | 4,636 | 13 | 19 | -17 | | 4,617 | -13 | -0.3% |
| H0062 | Grace Hospital | Brunswick Total | 96 | 14 | 20,541 | 20,566 | 56 | 85 | -77 | 0 | 20,708 | 167 | 0.8% |
| H0091 | Valtese General Hospital | Burke | 131 | 0 | 11,794 | 11,808 | 32 | 49 | -82 | 0 | 11,954 | 160 | 1.4% |
| | | Burke Total | 293 | 0 | | | | | | | | | |
| H0223 | Catawba Valley Medical Center | Catawba | 200 | 0 | 39,713 | 39,761 | 109 | 153 | -47 | | 41,508 | 1,795 | 4.5% |
| H0053 | Fye Regional Medical Center | Catawba | 209 | 0 | 47,695 | 47,752 | 131 | 183 | -26 | 0 | 49,065 | 1,370 | 2.9% |
| | | Catawba Total | 409 | 0 | | | | | | | | | |
| H0024 | Cleveland Regional Medical Center | Cleveland | 241 | 0 | 37,156 | 37,201 | 102 | 143 | -98 | | 36,061 | -1,095 | -2.9% |
| | Crawley Memorial Hospital (CON to convert 41 AC beds to LTCH beds and 10 AC beds to nursing beds issued 7.14.08) | Cleveland | 50 | -50 | 1 | 1 | 0 | 0 | 0 | | 0 | -1 | -100.0% |
| H0296 | Kings Mountain Hospital | Cleveland | 72 | 0 | 7,025 | 7,033 | 19 | 29 | -43 | 0 | 6,920 | -105 | -1.5% |
| H0113 | | Cleveland Total | 363 | -50 | | | | | | 0 | | | |
| H0027 | Lexington Memorial Hospital | Davidson | 94 | 0 | 11,231 | 11,244 | 31 | 46 | -48 | | 11,307 | 76 | 0.7% |
| H0112 | Thomasville Medical Center | Davidson | 123 | 0 | 12,900 | 12,915 | 35 | 53 | -70 | 0 | 13,186 | 286 | 2.2% |
| | | Davidson Total | 217 | 0 | | | | | | 0 | | | |
| H0015 | Duke University Hospital | Durham | 924 | 0 | 242,051 | 242,342 | 664 | 883 | -41 | | 229,920 | -2,131 | -0.9% |
| | (Duke University Hospital has a CON for 14 additional acute care beds under Policy AC-3. These 14 beds are not counted when determining acute care bed need.) | | | | | | | | | | | | |
| H0233 | Durham Regional Hospital | Durham | 316 | 0 | 64,732 | 64,830 | 178 | 245 | -67 | | 64,886 | 134 | 0.2% |
| | Duke/Durham Regional Hospital Totals | | 1,240 | 0 | 306,803 | 307,171 | 842 | 1,132 | -108 | | | | |
| H0075 | North Carolina Specialty Hospital | Durham | 18 | 0 | 3,248 | 3,252 | 9 | 13 | -5 | | 3,278 | 30 | 0.9% |
| | | Durham Total | 1,258 | 0 | | | | | | 0 | | | |

Projections based on Growth Factor at .02% per year for the next 6 years.
 Target Occupancy Factors: ADC<100=150%, ADC 100-200=140%, ADC>200=133%.
 (ADC=Average Daily Census)

Table 5A: Acute Care Bed Need Projections
 (2008 Utilization Data from Thomson as compiled by the Cecil B. Shepps Center for Health Services Research)

| A | B | C | D | E | F | G | H | I | J | K | | | |
|----------------|--|-----------|--------------------------|-------------------------------------|------------------------------|---------------------------------------|---|---|--|-------------------------|-------------------|---|-------------------------------------|
| License Number | Facility Name | County | Licensed Acute Care Beds | Adjustments for CONS/ Previous Need | Thomson 2008 Acute Care Days | 6 Years Growth Using .02% Growth Rate | 2014 Projected Average Daily Census (ADC) | 2014 Beds Adjusted for Target Occupancy | Projected 2014 Deficit or Surplus ("+" or "-") | 2014 Need Determination | 2008 License Days | 2008 License Days Minus 2008 Thomson Days | Percent Difference Thomson/ License |
| H0209 | Forsyth Medical Center | Forsyth | 751 | 39 | 210,295 | 210,547 | 577 | 767 | -23 | 2014 Need Determination | 212,302 | 2,007 | 1.0% |
| H0229 | Medical Park Hospital | Forsyth | 22 | 0 | 4,908 | 4,912 | 13 | 20 | -2 | | 4,909 | 3 | 0.1% |
| | <i>Forsyth/Medical Park Hospital Totals</i> | | 773 | 39 | 215,201 | 215,459 | 590 | 787 | -25 | | | | |
| H0011 | North Carolina Baptist Hospitals | Forsyth | 789 | 0 | 218,898 | 219,151 | 600 | 799 | 10 | | 212,843 | -6,055 | -2.8% |
| | 2007 Forsyth SWFP Need Determination | Forsyth | 1,562 | 65 | 0 | 0 | 0 | 0 | 0 | | 0 | 0 | |
| | <i>Forsyth Total</i> | | 1,562 | 65 | 0 | 0 | 0 | 0 | 0 | | 0 | 0 | |
| H0052 | High Point Regional Health System | Guilford | 291 | 16 | 67,906 | 67,988 | 186 | 261 | -46 | | 68,234 | 328 | 0.5% |
| H0159 | Moses Cone Health System | Guilford | 818 | -41 | 192,429 | 192,660 | 528 | 702 | -75 | | 196,507 | 4,078 | 2.1% |
| | <i>Guilford Total</i> | | 1,109 | -25 | 0 | 0 | 0 | 0 | 0 | | 0 | 0 | |
| H0230 | Halifax Regional Medical Center | Halifax | 186 | 0 | 33,056 | 33,096 | 91 | 136 | -50 | | 32,858 | -196 | -0.6% |
| H0004 | Our Community Hospital | Halifax | 20 | 0 | 52 | 52 | 0 | 0 | -20 | | 53 | 1 | 1.9% |
| | <i>Halifax Total</i> | | 206 | 0 | 0 | 0 | 0 | 0 | -20 | | 0 | 0 | |
| H0224 | Betsy Johnson Regional Hospital | Hammett | 101 | 0 | 27,358 | 27,391 | 75 | 113 | 12 | | 26,453 | -905 | -3.3% |
| | Hammett Health System Central Campus | Hammett | 0 | 50 | 0 | 0 | 0 | 0 | -50 | | | | |
| | <i>Betsy Johnson/Hammett Health System Totals</i> | | 101 | 50 | 27,358 | 27,391 | 75 | 113 | -38 | | | | |
| H0080 | Good Hope Hospital (closed effective 4/11/06) | Hammett | 0 | 34 | 0 | 0 | 0 | 0 | -34 | | | | |
| | <i>Hammett Total</i> | | 101 | 84 | 0 | 0 | 0 | 0 | -34 | | 0 | 0 | |
| H0161 | Margaret R. Pardee Memorial Hospital | Henderson | 193 | 0 | 23,211 | 23,239 | 64 | 96 | -97 | | 25,944 | 2,133 | 9.2% |
| H0019 | Park Ridge Hospital | Henderson | 62 | 0 | 14,135 | 14,152 | 39 | 58 | -4 | | 13,683 | -452 | -3.2% |
| | <i>Henderson Total</i> | | 255 | 0 | 0 | 0 | 0 | 0 | -4 | | 0 | 0 | |
| H0248 | Davis Regional Medical Center | Iredell | 120 | -18 | 16,476 | 16,496 | 45 | 68 | -34 | | 16,520 | 44 | 0.3% |
| H0289 | Lake Norman Regional Medical Center | Iredell | 105 | 18 | 27,321 | 27,354 | 75 | 112 | -11 | | 27,573 | 252 | 0.9% |
| | <i>Davis Regional/Lake Norman Regional Medical Center Totals</i> | | 225 | 0 | 43,797 | 43,850 | 120 | 180 | -45 | | | | |
| H0164 | Iredell Memorial Hospital | Iredell | 199 | 0 | 40,708 | 40,757 | 112 | 156 | -43 | | 41,198 | 490 | 1.2% |
| | <i>Iredell Total</i> | | 424 | 0 | 0 | 0 | 0 | 0 | -43 | | 0 | 0 | |
| H0034 | Angel Medical Center | Wake | 59 | 0 | 5,607 | 5,614 | 15 | 23 | -36 | | 5,677 | 70 | 1.2% |
| H0193 | Highlands-Cashiers Hospital | Wayne | 24 | 0 | 919 | 920 | 3 | 4 | -20 | | 920 | 1 | 0.1% |
| | <i>Wayne Total</i> | | 83 | 0 | 0 | 0 | 0 | 0 | -20 | | 0 | 0 | |

Projections based on Growth Factor at .02% per year for the next 6 years.
 Target Occupancy Factors: ADC<100=150%, ADC 100-200=140%, ADC>200=133%.
 (ADC=Average Daily Census)

Table 5A: Acute Care Bed Need Projections
 (2008 Utilization Data from Thomson as compiled by the Cecil B. Sheps Center for Health Services Research)

| A | B | C | D | E | F | G | H | I | J | K | | | |
|----------------|---|-------------|--------------------------|-------------------------------------|--|---------------------------------------|---|---|--|-------------------------|-------------------|--------------------------------------|-------------------------------------|
| License Number | Facility Name | County | Licensed Acute Care Beds | Adjustments for CONA/ Previous Need | Thomson 2008 Acute Care Days | 6 Years Growth Using .02% Growth Rate | 2014 Projected Average Daily Census (ADC) | 2014 Beds Adjusted for Target Occupancy | Projected 2014 Deficit or Surplus ("") | 2014 Need Determination | 2008 License Days | 2008 License Days Minus Thomson Days | Percent Difference Thomson/ License |
| H0042 | Carolinas Medical Center - Mercy & Pineville | Mecklenburg | 294 | 36 | 61,844 | 61,918 | 170 | 237 | -93 | | 62,585 | 751 | 1.2% |
| H0255 | Carolinas Medical Center - University | Mecklenburg | 130 | -36 | 21,979 | 22,005 | 60 | 90 | -4 | | 22,746 | 767 | 3.5% |
| H0071 | Carolinas Medical Center / Center for Mental Health | Mecklenburg | 795 | 0 | 233,864 | 234,145 | 641 | 853 | 58 | | 224,134 | 270 | 0.1% |
| H0010 | Presbyterian Hospital | Mecklenburg | 1,219 | 0 | 317,687 | 318,068 | 871 | 1,181 | -38 | | 154,182 | -436 | -0.3% |
| H0282 | Presbyterian Hospital Huntersville | Mecklenburg | 463 | 76 | 154,618 | 154,804 | 424 | 564 | 26 | | 17,842 | 761 | 4.5% |
| H0270 | Presbyterian Hospital Matthews | Mecklenburg | 60 | 15 | 17,081 | 17,102 | 47 | 70 | -5 | | 31,418 | 639 | 2.1% |
| | Presbyterian Hospital Mint Hill | Mecklenburg | 102 | 12 | 30,779 | 30,816 | 84 | 127 | 13 | | | 0 | 0.0% |
| | Presbyterian Hospital Orthopaedic | Mecklenburg | 0 | 50 | Utilization for reporting period shown below with H0251. | | | | -50 | | | 0 | 0.0% |
| H0251 | Presbyterian Hospital | Mecklenburg | 140 | -126 | 12,803 | 12,818 | 35 | 53 | 39 | | 12,803 | 0 | 0.0% |
| | 2009 Mecklenburg SMFP Need Determination | Mecklenburg | 765 | 27 | 215,281 | 215,539 | 591 | 814 | 22 | | | | |
| | Mecklenburg Total | Mecklenburg | 1,984 | 20 | 0 | 0 | | | | | | | |
| | Firsthealth Richmond Memorial Hospital | Richmond | 99 | 0 | 12,731 | 12,746 | 35 | 52 | -47 | | 12,794 | 63 | 0.5% |
| H0158 | Sandhills Regional Medical Center | Richmond | 54 | 6 | 11,962 | 11,976 | 33 | 49 | -11 | | 10,470 | -1,492 | -12.5% |
| H0265 | Richmond Total | Richmond | 153 | 6 | | | | | | | | | |
| H0023 | Annie Penn Hospital | Rockingham | 110 | 0 | 13,555 | 13,571 | 37 | 56 | -54 | | 14,050 | 495 | 3.7% |
| H0072 | Morehead Memorial Hospital | Rockingham | 108 | 0 | 21,894 | 21,920 | 60 | 90 | -18 | | 25,299 | 3,405 | 15.6% |
| | Rockingham Total | Rockingham | 218 | 0 | | | | | | | | | |
| H0049 | Hugh Chatham Memorial Hospital | Surry | 81 | 0 | 18,817 | 18,840 | 52 | 77 | -4 | | 19,018 | 201 | 1.1% |
| H0184 | Northern Hospital of Surry County | Surry | 100 | 0 | 15,719 | 15,738 | 43 | 65 | -35 | | 15,826 | 107 | 0.7% |
| | Surry Total | Surry | 181 | 0 | | | | | | | | | |

Projections based on Growth Factor at .02% per year for the next 6 years.
 Target Occupancy Factors: ADC<100=150%, ADC 100-200=140%, ADC>200=133%.
 (ADC=Average Daily Census)

Table 5A: Acute Care Bed Need Projections
 (2008 Utilization Data from Thomson as compiled by the Cecil B. Sheps Center for Health Services Research)

| A | B | C | D | E | F | G | H | I | J | K | L | M | N |
|----------------|--|---|--------------------------|--------------------------------------|------------------------------|---------------------------------------|---|---|--|-------------------------|-------------------|---|-------------------------------------|
| | | Counties with one hospital shown first, followed by counties with more than one hospital. | | | | | | | | | | | |
| License Number | Facility Name | County | Licensed Acute Care Beds | Adjustments for CONSL/ Previous Need | Thomson 2008 Acute Care Days | 6 Years Growth Using .02% Growth Rate | 2014 Projected Average Daily Census (ADC) | 2014 Beds Adjusted for Target Occupancy | Projected 2014 Deficit or Surplus ("-") | 2014 Need Determination | 2008 License Days | 2008 License Days Minus 2008 Thomson Days | Percent Difference Thomson/ License |
| H0238 | Duke Health Raleigh Hospital | Wake | 186 | 0 | 23,215 | 23,243 | 64 | 96 | -90 | | 24,525 | 1,410 | 5.1% |
| H0065 | Rex Hospital | Wake | 421 | 12 | 106,947 | 107,075 | 293 | 390 | -43 | | 105,270 | -1,577 | -1.5% |
| H0276 | WakeMed Cary Hospital | Wake | 156 | 0 | 38,542 | 38,588 | 106 | 148 | -8 | | 38,496 | -46 | -0.1% |
| H0199 | WakeMed Raleigh Campus | Wake | 515 | 60 | 177,318 | 177,531 | 486 | 647 | 72 | | 177,004 | -314 | -0.2% |
| | 2008 Wake SMFP Need Determination | Wake | | 60 | 215,850 | 216,119 | 592 | 795 | 64 | | | | |
| | 2009 SMFP Wake Need Determination (neonatal beds only) | Wake | | 41 | 0 | 0 | | | | | | | |
| | Wake Total | Wake | 1,278 | 131 | 555 | 586 | 2 | 2 | -26 | 0 | 654 | 69 | 11.3% |
| H0160 | Blowing Rock Hospital | Watauga | 28 | 0 | 21,199 | 21,224 | 58 | 87 | -30 | | 20,844 | -355 | -1.7% |
| H0077 | Watauga Medical Center | Watauga | 145 | 0 | | | | | | | | | |
| | Watauga Total | Watauga | 145 | 0 | | | | | | | | | |
| | Grand Total All Hospitals | | 20,458 | 425 | | | | | | | 36 | | |

Projections based on Growth Factor at .02% per year for the next 6 years.
 Target Occupancy Factors: ADC<100=150%, ADC 100-200=140%, ADC>200=133%.
 (ADC=Average Daily Census)

Attachment 3

| Facility | County | Health Service Area | Licensed and CON Approved Bed Capacity | SMFPs | | | | |
|--|------------|---------------------|--|----------|----------|----------|----------|----------|
| | | | | FFY 2004 | FFY 2005 | FFY 2006 | FFY 2007 | FFY 2008 |
| Alamance Regional Medical Center | Alamance | 2 | 182 | 41,231 | 42,441 | 40,888 | 43,733 | 45,843 |
| Alleghany Memorial Hospital | Alleghany | 1 | 41 | 3,339 | 3,427 | 2,602 | 2,399 | 2,785 |
| Anson Community Hospital | Anson | 5 | 52 | 6,469 | 6,241 | 5,962 | 5,367 | 4,152 |
| Ashe Memorial Hospital, Inc. | Ashe | 1 | 76 | 5,404 | 6,370 | 6,534 | 5,070 | 5,182 |
| Charles A. Cannon, Jr. Memorial Hospital | Avery | 1 | 30 | 10,446 | 8,916 | 6,505 | 5,965 | 6,433 |
| Beaufort County Hospital Association, Inc. | Beaufort | 6 | 120 | 13,830 | 16,311 | 11,416 | 10,684 | 7,987 |
| Pungo District Hospital | Beaufort | 6 | 39 | 2,852 | 2,620 | 2,289 | 2,369 | 2,259 |
| Bertie Memorial Hospital | Bertie | 6 | 6 | 914 | 1,256 | 1,470 | 1,566 | 1,578 |
| Bladen County Hospital | Bladen | 5 | 48 | 4,843 | 4,937 | 4,534 | 4,729 | 3,794 |
| Brunswick Community Hospital | Brunswick | 5 | 74 | 11,703 | 12,167 | 12,197 | 11,205 | 11,513 |
| Doshier Memorial Hospital | Brunswick | 5 | 36 | 5,737 | 4,393 | 4,577 | 4,696 | 4,630 |
| Memorial Mission Hospital | Buncombe | 1 | 673 | 170,460 | 170,709 | 176,440 | 182,390 | 186,888 |
| Grace Hospital, Inc. | Burke | 1 | 162 | 21,131 | 22,088 | 20,897 | 20,151 | 20,541 |
| Valdese General Hospital, Inc. | Burke | 1 | 131 | 13,623 | 12,994 | 12,439 | 12,151 | 11,794 |
| CMC NorthEast Medical Center | Cabarrus | 3 | 447 | 83,642 | 80,833 | 82,686 | 98,475 | 105,542 |
| Caldwell Memorial Hospital, Inc. | Caldwell | 1 | 110 | 14,378 | 15,221 | 15,986 | 15,095 | 17,505 |
| Carteret County General Hospital | Carteret | 6 | 135 | 31,691 | 29,520 | 30,290 | 28,952 | 27,483 |
| Frye Regional Medical Center | Catawba | 1 | 209 | 60,098 | 52,717 | 49,159 | 48,577 | 47,695 |
| Catawba Valley Medical Center | Catawba | 1 | 200 | 36,313 | 36,821 | 35,928 | 39,233 | 39,713 |
| Chatham Hospital, Inc. | Chatham | 4 | 25 | 2,545 | 2,475 | 2,638 | 2,855 | 3,341 |
| Murphy Medical Center, Inc. | Cherokee | 1 | 57 | 9,117 | 8,604 | 8,400 | 8,000 | 8,473 |
| Chowan Hospital | Chowan | 6 | 49 | 7,317 | 6,982 | 6,968 | 6,596 | 6,988 |
| Cleveland Regional Medical Center | Cleveland | 1 | 241 | 43,030 | 43,332 | 44,056 | 37,094 | 37,166 |
| Kings Mountain Hospital | Cleveland | 1 | 72 | 9,153 | 9,942 | 7,980 | 7,171 | 7,025 |
| Crawley Memorial Hospital | Cleveland | 1 | 0 | 105 | 91 | 21 | 9 | 1 |
| Columbus County Hospital, Inc. | Columbus | 6 | 154 | 25,887 | 26,241 | 24,905 | 25,813 | 18,581 |
| Craven Regional Medical Center | Craven | 6 | 307 | 76,924 | 77,809 | 75,750 | 78,365 | 77,708 |
| Cape Fear Valley Medical Center | Cumberland | 5 | 531 | 134,898 | 132,678 | 134,128 | 136,755 | 145,017 |
| Highsmith-Rainey Memorial Hospital | Cumberland | 5 | 66 | 3,670 | 0 | 0 | 0 | 0 |
| The Outer Banks Hospital, Inc. | Dare | 6 | 21 | 4,625 | 4,116 | 3,862 | 3,644 | 3,634 |
| Thomasville Medical Center | Davidson | 2 | 123 | 14,554 | 15,018 | 13,907 | 13,498 | 12,900 |
| Lexington Memorial Hospital, Inc. | Davidson | 2 | 94 | 11,844 | 13,147 | 13,188 | 11,681 | 11,231 |
| Davie County Hospital | Davie | 2 | 81 | 1,155 | 1,106 | 1,486 | 1,264 | 1,420 |
| Duplin General Hospital | Duplin | 6 | 61 | 12,616 | 11,536 | 9,776 | 11,459 | 11,401 |
| Duke University Hospital | Durham | 4 | 924 | 230,239 | 230,700 | 236,215 | 235,196 | 242,051 |
| Durham Regional Hospital | Durham | 4 | 316 | 68,336 | 66,096 | 62,567 | 63,487 | 64,752 |
| North Carolina Specialty Hospital | Durham | 4 | 18 | 1,678 | 2,047 | 3,163 | 2,505 | 3,248 |
| Heritage Hospital | Edgecombe | 6 | 101 | 13,229 | 13,326 | 12,857 | 14,054 | 15,631 |
| Forsyth Memorial Hospital, Inc. | Forsyth | 2 | 803 | 198,358 | 202,374 | 204,918 | 208,327 | 210,295 |
| North Carolina Baptist Hospital | Forsyth | 2 | 802 | 197,823 | 197,023 | 204,591 | 213,567 | 218,898 |
| Medical Park Hospital | Forsyth | 2 | 22 | 5,422 | 6,246 | 5,608 | 5,684 | 4,906 |
| Franklin Regional Medical Center | Franklin | 4 | 70 | 10,444 | 13,043 | 13,335 | 13,645 | 11,342 |
| Gaston Memorial Hospital, Inc | Gaston | 3 | 372 | 92,437 | 92,850 | 92,548 | 87,990 | 81,162 |
| Granville Medical Center | Granville | 4 | 62 | 7,436 | 7,825 | 7,072 | 7,280 | 8,077 |
| Moses H. Cone Memorial Hospital | Guilford | 2 | 777 | 195,128 | 198,106 | 194,847 | 192,620 | 192,429 |
| High Point Regional Health System | Guilford | 2 | 307 | 75,395 | 71,198 | 69,036 | 72,495 | 67,906 |

| Facility | County | Health Service Area | Licensed and GON Approved Bed Capacity | SMFPs | | | | |
|--|-------------|---------------------|--|----------|----------|----------|----------|----------|
| | | | | FFY 2004 | FFY 2005 | FFY 2006 | FFY 2007 | FFY 2008 |
| Halifax Regional Medical Center, Inc. | Halifax | 6 | 186 | 35,344 | 31,269 | 31,797 | 33,124 | 33,056 |
| Our Community Hospital | Halifax | 6 | 20 | 377 | 158 | 189 | 139 | 52 |
| Betsy Johnson Regional Hospital | Harnett | 5 | 101 | 19,648 | 23,677 | 27,957 | 28,675 | 27,358 |
| Harnett Health System | Harnett | 5 | 50 | 0 | 0 | 0 | 0 | 0 |
| Good Hope | Harnett | 5 | 34 | 7,264 | 5,978 | 705 | 0 | 0 |
| Haywood Regional Medical Center | Haywood | 1 | 153 | 20,954 | 20,525 | 19,998 | 21,412 | 14,217 |
| Pardee Memorial Hospital | Henderson | 1 | 193 | 29,564 | 28,797 | 27,504 | 26,797 | 23,211 |
| Park Ridge Hospital | Henderson | 1 | 62 | 14,697 | 14,127 | 13,112 | 13,397 | 14,135 |
| Roanoke-Chowan Hospital | Hertford | 6 | 86 | 16,634 | 17,298 | 15,940 | 15,220 | 14,323 |
| Iredell Memorial Hospital, Incorporated | Iredell | 3 | 199 | 44,576 | 45,969 | 42,880 | 41,817 | 40,708 |
| Lake Norman Regional Medical Center | Iredell | 3 | 123 | 30,097 | 31,616 | 28,474 | 27,757 | 27,321 |
| Davis Regional Medical Center | Iredell | 3 | 102 | 18,778 | 18,635 | 17,519 | 16,644 | 16,476 |
| Harris Regional Hospital, Inc. | Jackson | 1 | 86 | 18,160 | 17,698 | 17,774 | 19,445 | 18,293 |
| Johnston Memorial Hospital | Johnston | 4 | 179 | 33,836 | 36,599 | 38,110 | 38,576 | 37,952 |
| Central Carolina Hospital | Lee | 4 | 127 | 21,989 | 19,491 | 19,468 | 20,645 | 19,687 |
| Lenior Memorial Hospital | Lenoir | 6 | 218 | 47,518 | 47,982 | 45,366 | 43,336 | 46,226 |
| CMC - Lincoln | Lincoln | 3 | 101 | 15,776 | 14,543 | 14,833 | 15,624 | 15,253 |
| Angel Medical Center, Inc. | Macon | 1 | 59 | 4,967 | 5,309 | 4,754 | 5,655 | 5,607 |
| Highlands-Cashiers Hospital, Inc. | Macon | 1 | 24 | 1,633 | 1,546 | 1,074 | 756 | 919 |
| Marlin General Hospital | Marlin | 6 | 49 | 7,606 | 7,651 | 7,350 | 7,894 | 7,965 |
| The McDowell Hospital, Inc. | McDowell | 1 | 65 | 9,413 | 8,432 | 7,389 | 7,307 | 6,525 |
| Carolinas Medical Center | Mecklenburg | 3 | 795 | 223,825 | 220,722 | 227,068 | 228,343 | 233,864 |
| Presbyterian Hospital | Mecklenburg | 3 | 539 | 135,649 | 142,038 | 149,608 | 159,139 | 154,618 |
| CMC Mercy/Pineville | Mecklenburg | 3 | 330 | 53,782 | 54,186 | 54,807 | 56,294 | 61,844 |
| Prosbtyerian Matthews | Mecklenburg | 3 | 114 | 20,488 | 22,342 | 25,644 | 27,408 | 30,779 |
| CMC - University | Mecklenburg | 3 | 94 | 23,029 | 21,219 | 20,570 | 21,378 | 21,979 |
| Presbyterian Huntersville | Mecklenburg | 3 | 75 | 0 | 8,802 | 13,808 | 15,993 | 17,081 |
| Presbyterian Orthopaedic | Mecklenburg | 3 | 64 | 12,428 | 12,838 | 13,001 | 12,915 | 12,803 |
| Spruce Pine Community Hospital | Mitchell | 1 | 46 | 7,223 | 6,673 | 6,158 | 6,410 | 6,568 |
| FirstHealth Montgomery Memorial Hospital | Montgomery | 5 | 37 | 2,425 | 2,336 | 1,989 | 1,568 | 1,835 |
| FirstHealth Moore Reg. Hosp | Moore | 5 | 320 | 80,761 | 75,770 | 74,037 | 78,816 | 73,204 |
| Nash General Hospital | Nash | 6 | 270 | 59,119 | 60,010 | 58,039 | 58,151 | 56,887 |
| New Hanover Regional Medical Center | New Hanover | 5 | 647 | 151,717 | 155,945 | 152,173 | 147,013 | 139,307 |
| Onslow Memorial Hospital, Inc. | Onslow | 6 | 162 | 29,998 | 31,140 | 33,454 | 32,776 | 33,350 |
| University of North Carolina Hospitals | Orange | 4 | 693 | 173,800 | 171,845 | 176,345 | 193,172 | 199,848 |
| Albemarle Hospital | Pasquotank | 6 | 182 | 37,884 | 36,346 | 32,548 | 31,121 | 27,437 |
| Pender Memorial Hospital, Inc. | Pender | 5 | 43 | 3,986 | 4,336 | 4,279 | 3,603 | 5,647 |
| Person Memorial Hospital | Person | 4 | 50 | 10,784 | 11,529 | 8,731 | 11,868 | 9,717 |
| Pitt County Memorial Hospital, Inc. | Pitt | 6 | 734 | 183,906 | 188,014 | 189,924 | 196,651 | 197,218 |
| St. Lukes | Polk | 1 | 45 | 5,511 | 4,898 | 3,352 | 3,493 | 3,521 |
| Randolph Hospital | Randolph | 2 | 145 | 24,424 | 23,693 | 23,577 | 24,464 | 27,782 |
| FirstHealth Richmond Memorial Hospital | Richmond | 5 | 99 | 15,128 | 15,174 | 14,150 | 14,171 | 12,731 |
| Sandhills Regional Medical Center | Richmond | 5 | 60 | 11,791 | 13,292 | 13,559 | 13,227 | 11,962 |
| Southeastern Regional Medical Center | Robeson | 5 | 292 | 69,477 | 68,218 | 62,340 | 61,776 | 60,085 |
| Annie Penn Hospital | Rockingham | 2 | 110 | 17,246 | 17,914 | 17,778 | 16,465 | 13,555 |
| Morehead Memorial Hospital | Rockingham | 2 | 108 | 22,458 | 23,154 | 22,897 | 24,150 | 21,894 |
| Rowan Regional Medical Center, Inc. | Rowan | 3 | 223 | 39,401 | 37,002 | 36,768 | 35,958 | 34,559 |

| Facility | County | Health Service Area | Licensed and CON Approved Bed Capacity | SMFPs | | | | |
|--|--------------|---------------------|--|------------------|------------------|------------------|------------------|------------------|
| | | | | FFY 2004 | FFY 2005 | FFY 2006 | FFY 2007 | FFY 2008 |
| Rutherford Hospital, Inc. | Rutherford | 1 | 129 | 19,290 | 18,110 | 19,100 | 18,989 | 17,359 |
| Sampson Regional Medical Center | Sampson | 5 | 116 | 18,149 | 20,561 | 17,782 | 15,749 | 12,653 |
| Scotland Memorial Hospital, Inc. | Scotland | 5 | 118 | 26,337 | 26,367 | 25,732 | 24,557 | 24,706 |
| Stanly Memorial Hospital, Inc. | Stanly | 3 | 97 | 19,958 | 18,555 | 16,932 | 14,763 | 14,101 |
| Stokes-Reynolds Memorial Hospital, Inc. | Stokes | 2 | 53 | 3,490 | 1,696 | 1,649 | 1,365 | 842 |
| Northern Hospital District of Surry County | Surry | 2 | 100 | 17,030 | 17,032 | 17,144 | 16,678 | 15,719 |
| Hugh Chatham Hospital | Surry | 2 | 81 | 11,174 | 13,356 | 15,613 | 16,475 | 18,817 |
| Swain County Hospital | Swain | 1 | 48 | 1,720 | 1,799 | 1,874 | 1,645 | 1,607 |
| Transylvania Community Hospital, Inc. | Transylvania | 1 | 42 | 6,209 | 5,909 | 6,113 | 6,406 | 5,829 |
| CMC - Union | Union | 3 | 157 | 30,584 | 31,000 | 33,398 | 36,629 | 40,362 |
| Maria Parham Hospital Medical Center | Vance | 4 | 91 | 21,080 | 20,604 | 21,651 | 20,106 | 19,892 |
| WakeMed - Raleigh Campus | Wake | 4 | 575 | 191,257 | 158,980 | 166,249 | 175,351 | 177,318 |
| Rex Hospital, Inc. | Wake | 4 | 433 | 98,503 | 94,427 | 100,098 | 101,520 | 106,947 |
| Duke Health Raleigh Hospital | Wake | 4 | 186 | 31,085 | 28,724 | 22,268 | 23,185 | 23,215 |
| WakeMed Cary Hospital | Wake | 4 | 158 | 0 | 34,013 | 35,260 | 36,625 | 38,542 |
| Washington County Hospital | Washington | 6 | 12 | 2,834 | 2,610 | 2,458 | 2,140 | 1,849 |
| Watauga Medical Center, Inc. | Watauga | 1 | 117 | 24,915 | 23,836 | 23,519 | 22,661 | 21,199 |
| Blowing Rock Hospital | Watauga | 1 | 28 | 1,041 | 983 | 774 | 683 | 585 |
| Wayne Memorial Hospital, Inc. | Wayne | 6 | 255 | 60,930 | 60,210 | 59,606 | 59,380 | 60,022 |
| Wilkes Regional Medical Center | Wilkes | 1 | 120 | 19,207 | 21,524 | 21,502 | 17,707 | 16,184 |
| Wilson Medical Center | Wilson | 6 | 198 | 33,516 | 34,564 | 35,131 | 33,691 | 34,631 |
| Hoots Memorial Hospital, Inc. | Yadkin | 2 | 22 | 943 | 1,101 | 679 | 1,002 | 1,069 |
| Total | | | | 4,445,232 | 4,455,569 | 4,448,930 | 4,511,691 | 4,511,555 |
| Annual Growth Rate | | | | | 0.23% | -0.15% | 1.41% | 0.00% |
| Three Year Growth Rate | | | | | | | | 0.42% |

Source: Annual SMFPs and Proposed 2010 SMFP, Table 5A

Attachment 4

Kaiser State Health Facts

Category Providers & Service Use
 Subcategory Hospital Trends
 ER Visits, 1999-
 Topic 2007
 Full Title Hospital Emergency Room Visits per 1,000 Population, 1999-2007
 Data Type Number

| | 1999 | 2000 | 2001 | 2002 | 2003 | 2004 | 2005 | 2006 | 2007 |
|----------------|--------|--------|--------|--------|--------|--------|--------|--------|--------|
| North Carolina | 371.82 | 369.36 | 394.16 | 399.99 | 407.71 | 407.86 | 436.33 | 434.00 | 449.00 |
| Annual Growth | | -0.7% | 6.7% | 1.5% | 1.9% | 0.0% | 7.0% | -0.5% | 3.5% |

Notes Data are for community hospitals, which represent 85% of all hospitals. Federal hospitals, long term care hospitals, psychiatric hospitals, institutions for the mentally retarded, and alcoholism and other chemical dependency hospitals are not included.

Definitions NA: Not applicable when state/local government, non-profit, or for-profit hospitals do not exist in the state. Community Hospitals: All nonfederal, short-term general, and specialty hospitals whose facilities and services are available to the public.

Sources Calculation based on 1999, 2000, 2001, 2002, 2003, 2004, 2005, 2006 and 2007 AHA Annual Surveys. Copyright 2009 by Health Forum LLC, an affiliate of the American Hospital Association, available at <http://www.ahaonlinestore.com/ProductDisplay.asp?ProductID=637>; Annual Population Estimates by State, July 1, 1999, 2000, 2001, 2002, 2003, 2004, 2005, 2006, and 2007 Populations, U.S. Census Bureau, available at <http://www.census.gov/popest/states/NST-ann-est.html>.