



North Carolina Department of Health and Human Services
Division of Health Service Regulation
Certificate of Need Section

2704 Mail Service Center • Raleigh, North Carolina 27699-2704
<http://www.ncdhhs.gov/dhsr/>

Drexdal Pratt, Director

Beverly Eaves Perdue, Governor
Albert A. Delia, Acting Secretary

Craig R. Smith, Section Chief
Phone: (919) 855-3873
Fax: (919) 733-8139

November 5, 2012

Linda Skaggs
Gentiva Health Services
12900 Foster, Suite 400
Overland Park, KS 66213

No Review

Facility or Business: Gentiva Health Services
Project Description: Conversion from corporations to limited liability companies for the 23 facilities listed in Exhibit A
County: See Exhibit A
FID #: See Exhibit A

Dear Ms. Skaggs:

The Certificate of Need Section (CON Section) received your letter of October 4, 2012 regarding the above referenced proposal. Based on the CON law **in effect on the date of this response to your request**, the proposal described in your correspondence is not governed by, and therefore, does not currently require a certificate of need. However, please note that if the CON law is subsequently amended such that the above referenced proposal would require a certificate of need, this determination does not authorize you to proceed to develop the above referenced proposal when the new law becomes effective.

It should be noted that this determination is binding only for the facts represented by you. Consequently, if changes are made in the project or in the facts provided in your correspondence referenced above, a new determination as to whether a certificate of need is required would need to be made by the Certificate of Need Section. Changes in a project include, but are not limited to: (1) increases in the capital cost; (2) acquisition of medical equipment not included in the original cost estimate; (3) modifications in the design of the project; (4) change in location; and (5) any increase in the number of square feet to be constructed.




Ms. Skaggs
November 5, 2012
Page 2

In addition, you should contact the Acute and Home Care Licensure and Certification Sections of the Division of Health Service Regulation to determine if they have any requirements for development of the proposed project. Please contact the CON Section if you have any questions. Also, in all future correspondence you should reference the Facility I.D. # (FID) if the facility is licensed.

Sincerely,



Kim Randolph, Project Analyst



Craig R. Smith, Chief
Certificate of Need Section

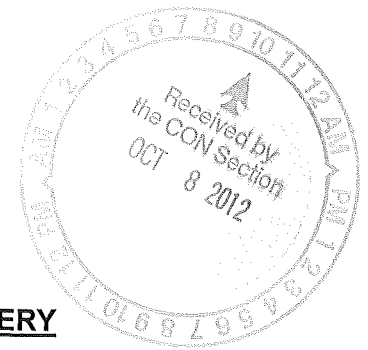
cc: Acute and Home Care Licensure and Certification Section, DHSR

Exhibit A
 Gentiva Health Services
 Conversion of the Listed Corporations to Limited Liability Companies (LLCs)

Facility	FID#	County	Owner
Gentiva Health Services	011260	Buncombe	Capital CareResources, Inc.
Gentiva Health Services	923657	Mecklenburg	Capital CareResources, Inc.
Gentiva Health Services	011257	Durham	Capital CareResources, Inc.
Gentiva Health Services	955208	Forsyth	Capital CareResources, Inc.
Gentiva Health Services	980843	Stokes	Capital CareResources, Inc.
Gentiva Health Services	923741	Wake	Capital CareResources, Inc.
Gentiva Health Services	924153	Pitt	Eastern Carolina Home Health Agency, Inc.
Gentiva Health Services	924159	Nash	Eastern Carolina Home Health Agency, Inc.
Gentiva Health Services	924157	Beaufort	Eastern Carolina Home Health Agency, Inc.
Gentiva Health Services	924156	Carteret	Home Health Care of Carteret County, Inc.
Gentiva Health Services	955730	Wayne	Tar Heel Health Care Services, Inc.
Gentiva Health Services	924155	Lenoir	Tar Heel Health Care Services, Inc.
Gentiva Health Services	971067	Lenoir	Tar Heel Health Care Services, Inc.
Gentiva Health Services	954154	Jones	Tar Heel Health Care Services, Inc.
Gentiva Health Services	923800	Franklin	Total Care Home Health of Louisburg, Inc.
Gentiva Health Services	954180	Cleveland	Total Care Home Health of North Carolina, Inc.
Gentiva Health Services	924182	Catawba	Total Care Home Health of North Carolina, Inc.
Gentiva Health Services	954176	Gaston	Total Care Home Health of North Carolina, Inc.
Gentiva Health Services	924171	Mecklenburg	Total Care Home Health of North Carolina, Inc.
Gentiva Health Services	924175	Forsyth	Total Care Home Health of North Carolina, Inc.
Gentiva Health Services	924181	Wilkes	Total Care Home Health of North Carolina, Inc.
Gentiva Health Services	924174	Rowan	Total Care Home Health of North Carolina, Inc.
Gentiva Health Services	924178	Iredell	Total Care Home Health of North Carolina, Inc.



Kevin



October 4, 2012

VIA OVERNIGHT DELIVERY

Mr. Craig Smith, Chief
North Carolina Department of Human Services
Division of Health Services Regulation
CON Section
Mail Service Center 2704
Raleigh, NC 27699-2704

Re: Gentiva Health Services' Business Conversion Plan for its North Carolina Operating Entities –

Capital CareResources, Inc.
Eastern Carolina Home Health Agency, Inc.
Home Health Care of Carteret County, Inc.
Tar Heel Health Care Services, Inc.
Total Care Home Health of Louisburg, Inc.
Total Care Home Health of North Carolina, Inc.
(See attached list of affected North Carolina Home Health Agencies for specific home health addresses and state licenses affected by the proposal set forth in this letter)

Dear Mr Smith:

By way of this letter, I am respectfully requesting a non-review determination under applicable North Carolina CON Rules for the below outlined business conversion plan for the above identified Gentiva Health Services ("Gentiva") operating entities holding North Carolina home health CONs and state licenses.

Business Conversion Plan:

Gentiva's current corporate organizational structure includes wholly owned subsidiaries comprised of multiple types of business structures, e.g., limited liability companies, corporations, etc. The proposed business conversion plan involves changing corporations that are "provider organizations" (holding North Carolina CONs, state licenses, and Medicare Provider Numbers) and corporations that are direct and indirect owners of the "provider organizations" to limited liability companies.

For your quick reference, please see the attached **current** and **proposed** streamlined corporate organizational charts depicting the conversion from corporations to limited liability companies for each of the identified "provider organizations," as well as their respective direct and indirect owners.

In addition to converting the identified corporations to limited liability companies, Gentiva proposes to streamline its immediate top level organizational structure by merging "The Healthfield Group, Inc." subsidiary into "Gentiva Health Services Holding Corp." Concurrent with the merger, all of the subsidiaries that are currently under "The Healthfield Group, Inc." will become subsidiaries under "Gentiva Health Services Holding Corp."

The above outlined business conversion plan will **not** create a change in any of the identified provider organizations':

1. FEIN (TIN) issued by the IRS, or
2. operating policies and procedures, or
3. governing body, or
4. current operating name, Gentiva Health Services, or
5. the immediate direct and indirect ownership of the provider organizations.

In essence, the only changes occurring will be:

1. the business structure of the provider organization and its direct/indirect owners, and
2. the removal of an indirect owner at the top of Gentiva's chain organization.

Based on the above information and our telephone conversations with your department, we do not believe Gentiva's proposed business conversion plan will affect any CON status. However, we were directed to make a "request for no review." Whereas we desire to implement the plan by the end of this year and would like to begin communications as soon as possible with the North Carolina Licensure & Certification Section, we would appreciate your prompt attention to this matter.

If you have any questions, please call me at 913-814-2716 or send an email to me at linda.skaggs@gentiva.com.

Thanking you in advance for your prompt attention to this matter.

Sincerely,



Linda Skaggs
Licensing Specialist

AFFECTED NORTH CAROLINA HOME HEALTH AGENCIES

Capital CareResources, Inc. (FEIN 58-2411159)

Asheville, NC (State License # HC2114; PTAN 34-7235)
9 Olde Eastwood Village Blvd.
Asheville, NC 28803-1670

Charlotte, NC (State License # HC0138; PTAN 34-7196)
9009-C Perimeter Woods Drive
Charlotte, NC 28216-0040

Durham, NC (State License # HC2111; PTAN 34-7236)
2505 Meridian Parkway
Suite 225
Durham, NC 27713-5246

Kernersville, NC (State License # HC1210; PTAN 34-7227)
720 Parke Centre
Suite A
Kernersville, NC 27284-3779

King, NC (State License # HC1699; PTAN 34-7330)
167 Moore Road
King, NC 27021-8770

Raleigh, NC (State License # HC0299; PTAN 34-7178)
3301 Benson Drive
Suite 222
Raleigh, NC 27609-7362

Eastern Carolina Home Health Agency, Inc. (FEIN 56-1590744)

Greenville, NC (State License # HC0328; PTAN 34-7031)
1970 West Arlington Blvd.
Suite B-2
Greenville, NC 27834-5783

Rocky Mount, NC (State License # HC0497; PTAN 34-7328)
4013 Capital Drive
Rocky Mount, NC 27804-3123

Washington, NC (State License # HC0329; PTAN 34-7329)
1638 Carolina Avenue
Washington, NC 27889-3365

Home Health Care of Carteret County, Inc. (FEIN 56-1556547)

Morehead City, NC (State License # HC0073; PTAN 34-7171)
Cypress Bay Plaza
5167 US Hwy 70 West
Suite 100
Morehead City, NC 28557-4635

Tar Heel Health Care Services, Inc. (FEIN 56-1436991)

Goldsboro, NC (State License # HC1299; PTAN 34-7331)
1200 Parkway Drive
Goldsboro, NC 27534-9432

Kinston, NC (State License # HC0428; PTAN 34-7124)
2111-C North Queen Street
Kinston, NC 28501-1647

Pink Hill, NC (State License # HC1565; PTAN 34-7226)
206 S. Turner Street
Pink Hill, NC 28572-7880

Pollocksville, NC (State License # HC0431; PTAN 34-7333)
124 Main Street
Pollocksville, NC 28573-5000

Total Care Home Health of Louisburg, Inc. (FEIN 68-0593592)
Youngsville, NC (State License # HC0215; PTAN 34-7217)
74 Wheaton Avenue
Youngsville, NC 27596-8691

Total Care Home Health of North Carolina, Inc. (FEIN 20-0091435)
Shelby, NC (State License # HC0221; PTAN 34-7317)
425 Cherryville Road
Suite A
Shelby, NC 28150-3651

Branches: **Hickory, NC (State License # HC0272)**
720 23rd Street NW
Hickory, NC 28601-4528

Gastonia, NC (State License # HC 0268)
934 Cox Road
Gastonia, NC 28054-3456

Charlotte, NC (State License # HC0097; PTAN 34-7091)
11111 Carmel Commons Blvd.
Suite 350
Charlotte, NC 28226-4561

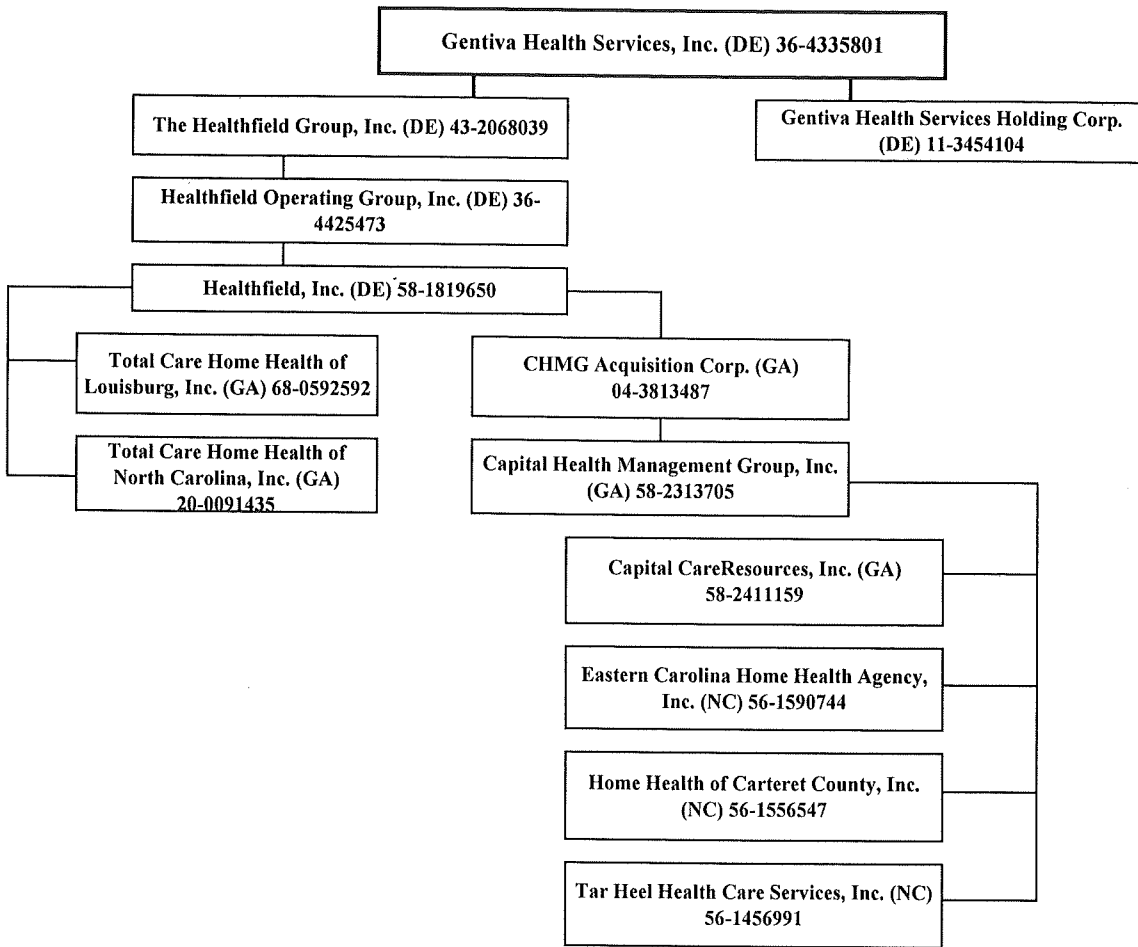
Subunit: **Winston-Salem, NC (State License #HC0231; PTAN 34-7318)**
145 Kimel Park Drive
Suite 200
Winston-Salem, NC 27103

Branches: **North Wilkesboro, NC (State License #HC0252)**
905 Cherry Street
Suite 10
North Wilkesboro, NC 28659-4252

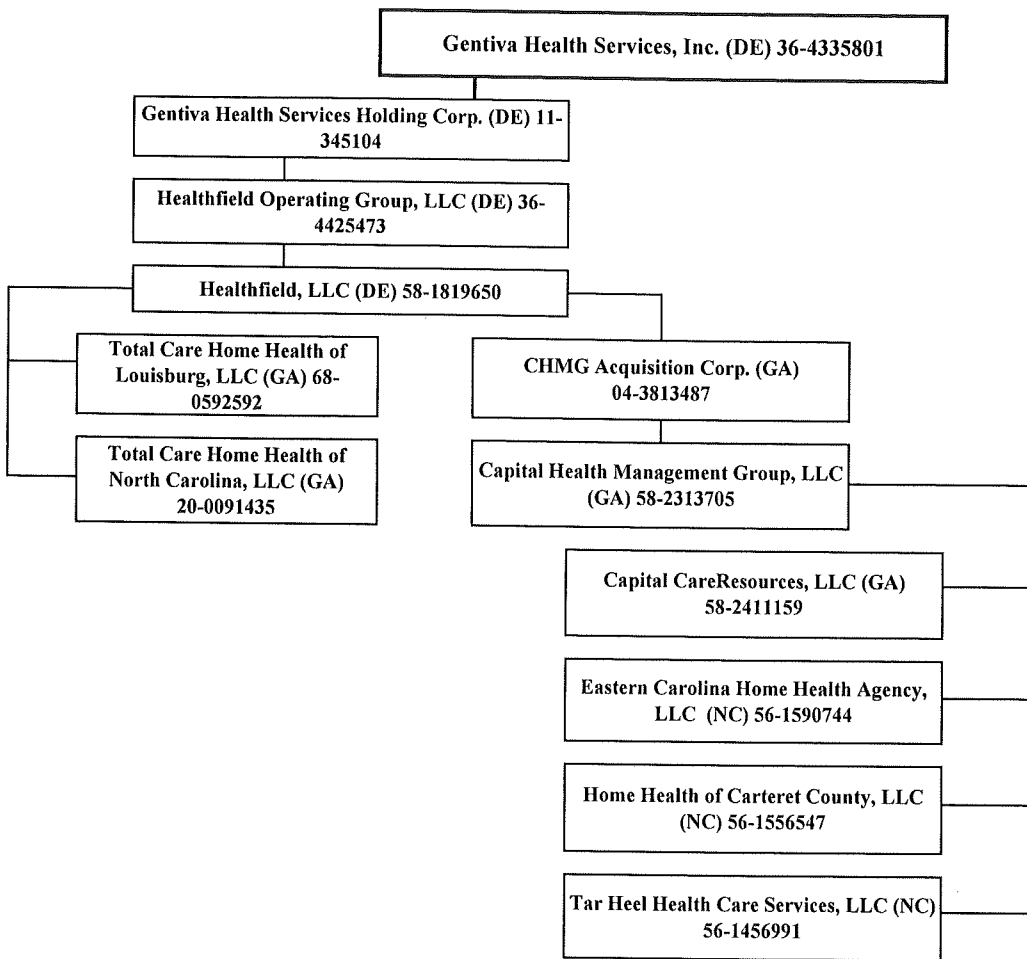
Salisbury, NC (State License #HC0265)
205 East Council Street
Suite C
Salisbury, NC 28144-5067

Statesville, NC (State License #HC0170)
1661 Davie Avenue
Statesville, NC 28677-3519

Current Streamlined Corporate Organizational Chart - NC HHA



Proposed Streamlined Corporate Organizational Chart - NC HHA



Core Synchronization Complete As Of 10/19/2012

SearchPermit/System #: Last Name/Business: First Name: Query:

Search returned 0 records

Search returned 46 records

Restatement:

Name	FID	Type	Status	Previous Names	Street	City	County
→ Gentiva Health Services	955208	HC	Active	Britthaven of Kernersville/HCA, CONTINUUM HOME CARE, Continuum Home Care of Kernersville, Tar Heel Home Health, Total Care Home Health	720 Parke Centre, Suite A	Kernersville	Forsyth ✓
→ Gentiva Health Services	924178	HC	Active	+Gentiva Health Services, Gentiva Health Services, Total Care Home Health, Total Care of North Carolina, Inc., Total Care, Inc.	1905 East Broad Street	Statesville	Iredell
→ Gentiva Health Services	960126	HC	Active	Olsten Kimberly Quality Care	297 East 22nd Street	Kannapolis	Rowan
→ Gentiva Health Services	960123	HC	Active	Olsten Kimberly Quality Care	145 Kimel Park, Suite 140	Winston Salem	Forsyth ✓
→ Gentiva Health Services	960124	HC	Active	Olsten Kimberly Quality Care	1144 Lenoir Rhyne Blvd., SE	Hickory	Catawba
→ Gentiva Health Services	944471	HC	Active	Baptist Hospital Home Care, BAPTIST HOSPITAL HOMECARE, Gentiva Health Services, Home Health Specialists	3187 Peters Creek Parkway, Suite B	Winston Salem	Forsyth
→ Gentiva Health Services	011260	HC	Active	Tar Heel Home Health	9 Olde Eastwood Village Blvd.	Asheville	Buncomb ✓
→ Gentiva Health Services	954180	HC	Active	Total Care Home Health, Total Care Home Health Inc., Total Care of North Carolina, Inc., Total Care, Inc.	425 Cherryville Road, Suite A	Shelby	Cleveland ✓
→ Gentiva Health Services	955730	HC	Active	Beverly Home Care, Home Technology Healthcare, Tar Heel Home Health	1200 Parkway Drive	Goldsboro	Wayne ✓
→ Gentiva Health Services	924026	HC	Active	Olsten Kimberly Quality Care	237 North Fayetteville Street, Suite C	Asheboro	Randolph
→ Gentiva Health Services	924028	HC	Active	Olsten Health Services, Olsten Kimberly QualityCare	1144 Lenoir Rhyne Blvd., SE	Hickory	Catawba
→ Gentiva Health Services	924035	HC	Active	Olsten Kimberly QualityCare	3150 North Elm Street, Suite 102	Greensboro	Guilford

→ Gentiva Health Services	924181	HC	Active	Total Care Home Health, Total Care of North Carolina, Inc., Total Care, Inc.	905 Cherry North Street, Suite 10	Wilkesboro	Wilkes ✓
→ Gentiva Health Services	980843	HC	Active	Capital CareResources, Inc., Continuum Home Care, Continuum Home Care of King, Tar Heel Home Health, Total Care Home Health	167 Moore King Road		Stokes ✓
→ Gentiva Health Services	924159	HC	Active	Beverly Home Care, Home Technology Healthcare, Tar Heel Home Health	4013 Capital Drive	Rocky Mount	Nash ✓
→ Gentiva Health Services	924171	HC	Active	Total Care Home Health, Total Care Of North Carolina, Total Care, Inc.	11111 Carmel Commons Blvd., Suite 350	Charlotte	Mecklenb ✓
→ Gentiva Health Services	954043	HC	Active	Olsten Kimberly QualityCare	918B Seventh Avenue	Garner	Wake
→ Gentiva Health Services	923657	HC	Active	Capital Care Resources, Inc., CareTeam Home Health Services, Inc., Carriage Club Home Health Agency, Symphony Home Care Services, Tar Heel Home Health, Total Care Home Health	9009-C Perimeter Woods Drive	Charlotte	Mecklenb ✓
→ Gentiva Health Services	923741	HC	Active	Capital CareResources, Inc., dba/TAR HEEL HOME HEALTH, Easter Seal Home Health Services, EASTER SEAL HOME HEALT SERVICES, EASTER SEAL HOME HLTH SERVICES, EASTER SEAL SOCIETY N.C., INC, TAR HEEL HOME HEALTH	3301 Benson Drive, Suite 222	Raleigh	Wake ✓
→ Gentiva Health Services	954176	HC	Active	Total Care Home Health, Total Care of North Carolina, Inc., Total Care, Inc.	934 Cox Road	Gastonia	Gaston ✓
→ Gentiva Health Services	923800	HC	Active	Franklin Regional Home Health, HEALTH CARE SERVICES OF THE CAROLINAS, HealthCare Services of the Carolinas, Inc., HLTHCARE SERVS /THE CAROLINAS, Regional Home Health, Tar Heel Home Health, Total Care Home Health of Louisburg, Inc., Total Care of Louisburg Home Health, Inc.	74 Wheaton Ave.	Youngsville	Franklin ✓
→ Gentiva Health Services	924042	HC	Active	Olsten Health Services, Olsten Kimberly QualityCare	918B Seventh Avenue	Garner	Wake
→ Gentiva Health Services	924044	HC	Active	Olsten Health Services, Olsten Kimberly QualityCare	297 East 22nd Street	Kannapolis	Rowan
→ Gentiva Health Services	924046	HC	Active	Olsten Health Services, Olsten Kimberly QualityCare	136 Fairview Road, Suite 110	Mooresville	Iredell
→ Gentiva Health Services	924153	HC	Active	Beverly Home Care, BEVERLY HOME CARE (Rocky Mt), BEVERLY HOME CARE-SUB UNIT, Home Technology Healthcare, TAR HEEL HOME	1970 B2 W. Arlington Boulevard	Greenville	Pitt ✓

→	Gentiva Health Services	924156	HC	Active	HEALTH Beverly Home Care,Home Technology Healthcare,Tar Heel Home Health	5167 Us Hwy 70 West, Suite 100	Morehead City		Carteret	✓
→	Gentiva Health Services	924157	HC	Active	Beverly Home Care,Home Technology Healthcare,Tar Heel Home Health	1638 Carolina avenue	Washington		Beaufort	✓
→	Gentiva Health Services	924174	HC	Active	Total Care Home Health,Total Care Home Health of N.C. Inc.,Total Care of North Carolina,Total Care, Inc.,Total CareHome Health of N.C. Inc.	205 East Council Street, Suite C	Salisbury		Rowan	✓
→	Gentiva Health Services	924182	HC	Active	Total Care Home Health,Total Care of North Carolina, Inc.,Total Care, Inc.	720 23rd Street, NW	Hickory		Catawba	✓
→	Gentiva Health Services	960125	HC	Active	Olsten Kimberly Quality Care	136 Fairview Road, Suite 110	Mooreville		Iredell	
→	Gentiva Health Services	960127	HC	Active	Olsten Kimberly Quality Care	8520 Cliff Cameron Drive, Suite 140	Charlotte		Mecklenb	
→	Gentiva Health Services	924027	HC	Active	GENTIVA HEALTH SERVICES,OLSTEN HEALTH SERVICES,OLSTEN KIMBERLY QUALITY CARE,Olsten Kimberly QualityCare,OLSTEN KIMBERLY QUALITY CARE	3187 Peters Creek Parkway, Suite A	Winston-Salem		Forsyth	
→	Gentiva Health Services	924034	HC	Active	Olsten Kimberly QualityCare	1002 North Greensboro Church Street			Guilford	
→	Gentiva Health Services	924036	HC	Active	Olsten Health Services,Olsten Kimberly QualityCare	8520 Cliff Cameron Drive, Suite 140	Charlotte		Mecklenb	
→	Gentiva Health Services	924155	HC	Active	Beverly Home Care,Home Technology Healthcare,Tar Heel Home Health	2111-C North Queen Street	Kinston		Lenoir	✓
→	Gentiva Health Services	924175	HC	Active	Total Care Home Health,Total Care of North Carolina, Inc.,Total Care, Inc.	145 Kimel Park Drive, Suite 200	Winston-Salem		Forsyth	
→	Gentiva Health Services	924178	HC	Active	+Gentiva Health Services,Gentiva Health Services,Total Care Home Health,Total Care of North Carolina, Inc.,Total Care, Inc.	1661 Davie Avenue	Statesville		Iredell	✓
→	Gentiva Health Services	954038	HC	Active	Olsten Health Services,Olsten Kimberly Quality Care	208 - A West Salisbury Street	Asheboro		Randolph	
→	Gentiva Health Services	010743	HC	Active	Total Care Home Health,Total Care of North Carolina,Total Care, Inc.	2160 Commerce Drive, Suite D	Monroe		Union	
→	Gentiva Health Services	011257	HC	Active	Tar Heel Home Health	2505 Meridian Parkway, Suite 225	Durham		Durham	✓
→	Gentiva	971067	HC	Active	Preferred Home Health,Tar	206 South	Pink Hill		Lenoir	✓

Health Services				Heel Home Health	Turner Street			
→ Gentiva Health Services	954154	HC	Active	Beverly Home Care, Home Technology Healthcare, Tar Heel Home Health	124 Main Street	Pollocksville	Jones	✓
→ Gentiva Respiratory Services & HME	080607	HC	Active		622 Signal Hill Drive Ext.	Statesville	Iredell	
→ Gentiva Respiratory Services & HME	080192	HC	Active		1014 Industrial Drive, Suite 3	Shelby	Cleveland	
→ Gentiva Respiratory Services & HME	080712	HC	Active		271 Hickory Suten Suite 600	Mt. Airy	Surry	
→ Gentiva Respiratory Services & HME	070658	HC	Active	Gentive Respiratory Services & HME	907 Cherry Street, Suite B	North Wilkesboro	Wilkes	

Home Care Master Facility Data

10/19/2012

All and Ordered by Facility

Gentiva Health Services Svc Type **HC** FID **010743**

Mail: 12900 Foster, Suite 400; Licensing & Certification Dept Overland Park, KS 66213-

County **Union**

Site: 2160 Commerce Drive, Suite D Monroe, NC 28110-

Phone **(704)283-0535**

Licensee: **Total Care Home Health of North Carolina, Inc.**

License No	Effective	Expires	Closed	Terminated	Sanction	Begin	End
HC2057	01/01/2012	12/31/2012					

Gentiva Health Services Svc Type **HC** FID **011257** ✓

Mail: 12900 Foster, Suite 400; Licensing & Certification Dept Overland Park, KS 66213-

County **Durham**

Site: 2505 Meridian Parkway, Suite 225 Durham, NC 27713-

Phone **(919)361-1921**

Licensee: **Capital CareResources, Inc.**

License No	Effective	Expires	Closed	Terminated	Sanction	Begin	End
HC2111	05/17/2012	12/31/2012					

Gentiva Health Services Svc Type **HC** FID **011260** ✓

Mail: 12900 Foster, Suite 400; Licensing & Certification Dept Overland Park, KS 66213-

County **Buncombe**

Site: 9 Olde Eastwood Village Blvd. Asheville, NC 28803-1670

Phone **(828)298-1370**

Licensee: **Capital Care Resources, Inc.**

License No	Effective	Expires	Closed	Terminated	Sanction	Begin	End
HC2114	01/01/2012	12/31/2012					

Gentiva Health Services Svc Type **HC** FID **923657** ✓

Mail: 12900 Foster, Suite 400; Licensing & Certification Dept Overland Park, KS 66213-

County **Mecklenburg**

Site: 9009-C Perimeter Woods Drive Charlotte, NC 28216-

Phone **(704)598-2716**

Licensee: **Capital CareResources, Inc.**

License No	Effective	Expires	Closed	Terminated	Sanction	Begin	End
HC0138	01/01/2012	12/31/2012					

Gentiva Health Services Svc Type **HC** FID **923741** ✓

Mail: 12900 Foster, Suite 400; Licensing & Certification Dept Overland Park, KS 66213-

County **Wake**

Site: 3301 Benson Drive, Suite 222 Raleigh, NC 27609-

Phone **(919)881-9492**

Licensee: **Capital CareResources, Inc.**

License No	Effective	Expires	Closed	Terminated	Sanction	Begin	End
HC0299	01/01/2012	12/31/2012					

Gentiva Health Services Svc Type **HC** FID **923800** ✓

Mail: 12900 Foster, Suite 400; Licensing & Certification Dept Overland Park, KS 66213-

County **Franklin**

Site: 74 Wheaton Ave. Youngsville, NC 27596-

Phone **(919)554-2279**

Licensee: **Total Care Home Health of Louisburg, Inc.**

License No	Effective	Expires	Closed	Terminated	Sanction	Begin	End
HC0215	01/01/2012	12/31/2012					

Gentiva Health Services Svc Type **HC** FID **924026**

Mail: Attn: Licensing & Regulatory Dept.; 12900 Foster Street, Suite 400 Overland Park,

County **Randolph**

Site: 237 North Fayetteville Street, Suite C Asheboro, NC 27203-

Phone **(336)629-3178**

Licensee: **Gentiva Health Services (USA), Inc.**

License No	Effective	Expires	Closed	Terminated	Sanction	Begin	End
HC0128	01/01/2009	12/31/2009	12/31/2009		Close Facility	12/31/2009	

Home Care Master Facility Data

10/19/2012

All and Ordered by Facility

Gentiva Health Services

Mail: Licensing & Certification Dept; 12900 Foster Street, Suite 400 Overland Park, KS
 Site: 3187 Peters Creek Parkway, Suite A Winston-Salem, NC 27127-4713
 Licensee: **Gentiva Certified HealthCare Corp.**

Svc Type **HC** FID **924027**
 County **Forsyth**
 Phone **(336)397-3820**

License No	Effective	Expires	Closed	Terminated	Sanction	Begin	End
HC0567	04/25/2012	12/31/2012				//	//

Gentiva Health Services

Mail: Licensing & Certification Dept; 12900 Foster Street, Suite 400 Overland Park, KS
 Site: 1144 Lenoir Rhyne Blvd., SE Hickory, NC 28602-
 Licensee: **Gentiva Certified HealthCare Corp.**

Svc Type **HC** FID **924028**
 County **Catawba**
 Phone **(828)322-6131**

License No	Effective	Expires	Closed	Terminated	Sanction	Begin	End
HC0227	01/01/2012	12/31/2012				//	//

Gentiva Health Services

Mail: Attn: Licensing & Regulatory Dept.; 12900 Foster Street, Suite 400 Overland Park,
 Site: 1144 Lenoir Rhyne Blvd., SE Hickory, NC 28602-
 Licensee: **Gentiva Health Services (USA), Inc.**

Svc Type **NP** FID **924031**
 County **Catawba**
 Phone **(828)322-6131**

License No	Effective	Expires	Closed	Terminated	Sanction	Begin	End
NP0222	01/01/2009	12/31/2009	12/31/2009		Close Facility	12/31/2009	//

Gentiva Health Services

Mail: Attn: Licensing & Regulatory Dept.; 12900 Foster Street, Suite 400 Overland Park,
 Site: 1002 North Church Street Greensboro, NC 27401-
 Licensee: **Gentiva Health Services (USA), Inc.**

Svc Type **HC** FID **924034**
 County **Guilford**
 Phone **(336)379-7413**

License No	Effective	Expires	Closed	Terminated	Sanction	Begin	End
HC0322	01/01/2009	12/31/2009	12/31/2009		Close Facility	12/31/2009	//

Gentiva Health Services

Mail: Licensing & Certification Dept; 12900 Foster Street, Suite 400 Overland Park, KS
 Site: 3150 North Elm Street, Suite 102 Greensboro, NC 27408-3881
 Licensee: **Gentiva Certified HealthCare Corp.**

Svc Type **HC** FID **924035**
 County **Guilford**
 Phone **(336)288-1181**

License No	Effective	Expires	Closed	Terminated	Sanction	Begin	End
HC0952	01/01/2012	12/31/2012				//	//

Gentiva Health Services

Mail: Attn: Licensing & Certification Dep; 12900 Foster Street, Suite 400 Overland Park,
 Site: 8520 Cliff Cameron Drive, Suite 140 Charlotte, NC 28269-
 Licensee: **Gentiva Certified HealthCare Corp.**

Svc Type **HC** FID **924036**
 County **Mecklenburg**
 Phone **(704)594-9029**

License No	Effective	Expires	Closed	Terminated	Sanction	Begin	End
HC0787	01/01/2012	12/31/2012				//	//

Gentiva Health Services

Mail: 918B Seventh Avenue Garner, NC 27529-
 Site: 918B Seventh Avenue Garner, NC 27529-
 Licensee: **Olsten Certified HealthCare Corp.**

Svc Type **HC** FID **924042**
 County **Wake**
 Phone **(919)661-6648**

License No	Effective	Expires	Closed	Terminated	Sanction	Begin	End
HC0954	02/01/2000	05/15/2000	03/01/2001		Close Facility	03/01/2001	//

Home Care Master Facility Data

10/19/2012

All and Ordered by Facility

Gentiva Health Services						Svc Type HC	FID 924044
Mail: Licensing & Certification Dept; 12900 Foster Street, Suite 400 Overland Park, KS						County Rowan	
Site: 297 East 22nd Street Kannapolis, NC 28083-						Phone (704)933-1001	
Licensee: Gentiva Certified HealthCare Corp.							
License No	Effective	Expires	Closed	Terminated	Sanction	Begin	End
HC0270	01/01/2012	12/31/2012				//	//
Gentiva Health Services						Svc Type NP	FID 924045
Mail: Attn: Licensing & Regulatory Dept.; 12900 Foster Street, Suite 400 Overland Park,						County Rowan	
Site: 297 East 22nd Street Kannapolis, NC 28083-						Phone (704)933-1001	
Licensee: Gentiva Health Services (USA), Inc.							
License No	Effective	Expires	Closed	Terminated	Sanction	Begin	End
NP0263	01/01/2009	12/31/2009	12/31/2009		Close Facility	12/31/2009	//
Gentiva Health Services						Svc Type HC	FID 924046
Mail: Attn: Licensing & Certification Dep; t12900 Foster Street, Suite 400 Overland Park,						County Iredell	
Site: 136 Fairview Road, Suite 110 Mooresville, NC 28117-						Phone (704)799-4611	
Licensee: Gentiva Certified HealthCare Corp.							
License No	Effective	Expires	Closed	Terminated	Sanction	Begin	End
HC0159	01/01/2012	12/31/2012				//	//
Gentiva Health Services						Svc Type NP	FID 924047
Mail: Attn: Licensing & Regulatory Dept.; 12900 Foster Street, Suite 400 Overland Park,						County Iredell	
Site: 136 Fairview Road, Suite 110 Mooresville, NC 28117-						Phone (704)799-4611	
Licensee: Gentiva Health Services (USA), Inc.							
License No	Effective	Expires	Closed	Terminated	Sanction	Begin	End
NP0139	01/01/2009	12/31/2009	12/31/2009		Close Facility	12/31/2009	//
Gentiva Health Services						Svc Type HC	FID 924153 ✓
Mail: 12900 Foster, Suite 400; Licensing & Certification Dept Overland Park, KS 66213-						County Pitt	
Site: 1970 B2 W. Arlington Boulevard Greenville, NC 27834-						Phone (252)353-3300	
Licensee: Eastern Carolina Home Health Agency, Inc.							
License No	Effective	Expires	Closed	Terminated	Sanction	Begin	End
HC0328	01/01/2012	12/31/2012				//	//
Gentiva Health Services						Svc Type HC	FID 924155 ✓
Mail: 12900 Foster, Suite 400; Licensing & Certification Dept Overland Park, KS 66213-						County Lenoir	
Site: 2111-C North Queen Street Kinston, NC 28501-						Phone (252)522-1458	
Licensee: Tar Heel Health Care Services, Inc.							
License No	Effective	Expires	Closed	Terminated	Sanction	Begin	End
HC0428	01/01/2012	12/31/2012				//	//
Gentiva Health Services						Svc Type HC	FID 924156 ✓
Mail: 12900 Foster, Suite 400; Licensing & Certification Dept Overland Park, KS 66213-						County Carteret	
Site: 5167 Us Hwy 70 West, Suite 100 Morehead City, NC 28557-						Phone (252)726-9300	
Licensee: Home Health Care of Carteret County, Inc.							
License No	Effective	Expires	Closed	Terminated	Sanction	Begin	End
HC0073	01/01/2012	12/31/2012				//	//

Home Care Master Facility Data

10/19/2012

All and Ordered by Facility

Gentiva Health Services

Svc Type **HC** FID **924157** ✓

Mail: 12900 Foster, Suite 400; Licensing & Certification Dept Overland Park, KS 66213-

County **Beaufort**

Site: 1638 Carolina avenue Washington, NC 27889-3365

Phone **(252)946-7145**

Licensee: **Eastern Carolina Home Health Agency, Inc.**

License No	Effective	Expires	Closed	Terminated	Sanction	Begin	End
9 ✓ HC0329	01/01/2012	12/31/2012					

Gentiva Health Services

Svc Type **HC** FID **924159** ✓

Mail: 12900 Foster, Suite 400; Licensing and Certification Overland Park, KS 66213-

County **Nash**

Site: 4013 Capital Drive Rocky Mount, NC 27804-

Phone **(252)443-7083**

Licensee: **Eastern Carolina Home Health Agency, Inc.**

License No	Effective	Expires	Closed	Terminated	Sanction	Begin	End
8 ✓ HC0497	01/01/2012	12/31/2012					

Gentiva Health Services

Svc Type **HC** FID **924171** ✓

Mail: 12900 Foster, Suite 400; Licensing & Certification Dept Overland Park, KS 66213-

County **Mecklenburg**

Site: 11111 Carmel Commons Blvd., Suite 350 Charlotte, NC 28226-

Phone **(704)542-1167**

Licensee: **Total Care Home Health of North Carolina, Inc.**

License No	Effective	Expires	Closed	Terminated	Sanction	Begin	End
17 ✓ HC0097	01/01/2012	12/31/2012					

Gentiva Health Services

Svc Type **HC** FID **924174** ✓

Mail: 12900 Foster, Suite 400 Overland Park, KS 66213-

County **Rowan**

Site: 205 East Council Street, Suite C Salisbury, NC 28144-

Phone **(704)636-3334**

Licensee: **Total Care Home Health of North Carolina Inc.**

License No	Effective	Expires	Closed	Terminated	Sanction	Begin	End
18b ✓ HC0265	01/01/2012	12/31/2012					

Gentiva Health Services

Svc Type **HC** FID **924175**

Mail: 12900 Foster, Suite 400; Licensing & Certification Dept Overland Park, KS 66213-

County **Forsyth**

Site: 145 Kimel Park Drive, Suite 200 Winston-Salem, NC 27103-6972

Phone **(336)760-8336**

Licensee: **Total Care Home Health of NC, Inc.**

License No	Effective	Expires	Closed	Terminated	Sanction	Begin	End
18 ✓ HC0231	01/01/2012	12/31/2012					

Gentiva Health Services

Svc Type **HC** FID **924178** ✓

Mail: 12900 Foster, Suite 400; Licensing & Certification Dept Overland Park, KS 66213-

County **Iredell**

Site: 1905 East Broad Street Statesville, NC 28625-

Phone **(704)872-3606**

Licensee: **Total Care Home Health of North Carolina, Inc.**

License No	Effective	Expires	Closed	Terminated	Sanction	Begin	End
18c ✓ HC0170	09/27/2012	12/31/2012					

Gentiva Health Services

Svc Type **HC** FID **924181** ✓

Mail: 12900 Foster, Suite 400; Licensing & Certification Dept Overland Park, KS 66213-

County **Wilkes**

Site: 905 Cherry Street, Suite 10 North Wilkesboro, NC 28659-

Phone **(336)667-3389**

Licensee: **Total Care Home Health of North Carolina Inc**

License No	Effective	Expires	Closed	Terminated	Sanction	Begin	End
18a ✓ HC0252	01/01/2012	12/31/2012					

Home Care Master Facility Data

10/19/2012

All and Ordered by Facility

Gentiva Health Services

Svc Type **HC** FID **924182** ✓

Mail: 12900 Foster, Suite 400; Licensing & Certification Dept Overland Park, KS 66213-

County **Catawba**

Site: 720 23rd Street, NW Hickory, NC 28601-

Phone **(828)328-1871**

Licensee: **Total Care Home Health of North Carolina, Inc.**

16a

License No	Effective	Expires	Closed	Terminated	Sanction	Begin	End
HC0272	01/01/2012	12/31/2012				//	//

Gentiva Health Services

Svc Type **NP** FID **924344**

Mail: Attn: Licensing & Regulatory Dept.; 12900 Foster Street, Suite 400 Overland Park,

County **Forsyth**

Site: 145 Kimel Park, Suite 140 Winston Salem, NC 27103-

Phone **(336)760-0520**

Licensee: **Gentiva Health Services (USA), Inc.**

License No	Effective	Expires	Closed	Terminated	Sanction	Begin	End
NP0247	01/01/2009	12/31/2009	12/31/2009		Close Facility	12/31/2009	//

Gentiva Health Services

Svc Type **HC** FID **944471**

Mail: 12900 Foster, Suite 400; Licensing & Certification Dept Overland Park, KS 66213-

County **Forsyth**

Site: 3187 Peters Creek Parkway, Suite B Winston Salem, NC 27127-4713

Phone **(336)397-3331**

Licensee: **Gentiva Certified HealthCare Corp.**

License No	Effective	Expires	Closed	Terminated	Sanction	Begin	End
HC1131	04/25/2012	12/31/2012				//	//

Gentiva Health Services

Svc Type **HC** FID **954038**

Mail: Licensing & Certification Dept; 12900 Foster Street, Suite 400 Overland Park, KS

County **Randolph**

Site: 208 - A West Salisbury Street Asheboro, NC 27203-

Phone **(336)629-3178**

Licensee: **Gentiva Certified HealthCare Corp.**

License No	Effective	Expires	Closed	Terminated	Sanction	Begin	End
HC0953	01/01/2012	12/31/2012				//	//

Gentiva Health Services

Svc Type **HC** FID **954043**

Mail: 918B Seventh Avenue Garner, NC 27529-

County **Wake**

Site: 918B Seventh Avenue Garner, NC 27529-

Phone **(919)848-8020**

Licensee: **Olsten Health Services (USA), Inc.**

License No	Effective	Expires	Closed	Terminated	Sanction	Begin	End
HC0059	02/01/2000	05/15/2000	03/01/2001		Close Facility	03/01/2001	//

Gentiva Health Services

Svc Type **HC** FID **954154** ✓

Mail: 12900 Foster, Suite 400; Licensing & Certification Dept Overland Park, KS 66213-

County **Jones**

Site: 124 Main Street Pollocksville, NC 28573-

Phone **(252)224-1012**

Licensee: **Tar Heel Health Care Services, Inc.**

14 ✓

License No	Effective	Expires	Closed	Terminated	Sanction	Begin	End
HC0431	01/01/2012	12/31/2012				//	//

Gentiva Health Services

Svc Type **HC** FID **954176** ✓

Mail: 12900 Foster, Suite 400; Attn: Corp. Licensure Dept. Overland Park, KS 66213-

County **Gaston**

Site: 934 Cox Road Gastonia, NC 28054-3456

Phone **(704)824-7099**

Licensee: **Total Care Home Health of North Carolina Inc.**

16b

License No	Effective	Expires	Closed	Terminated	Sanction	Begin	End
HC0268	01/01/2012	12/31/2012				//	//

Home Care Master Facility Data

10/19/2012

All and Ordered by Facility

Gentiva Health Services Svc Type **HC** FID **954180** ✓
 Mail: 12900 Foster, Suite 400; Licensing & Certification Dept Overland Park, KS 66213-
 Site: 425 Cherryville Road, Suite A Shelby, NC 28150-
 Licensee: **Total Care Home Health of North Carolina, Inc.** County **Cleveland**
Phone **(704)484-3294**

License No	Effective	Expires	Closed	Terminated	Sanction	Begin	End
✓ HC0221	01/01/2012	12/31/2012					

Gentiva Health Services Svc Type **HC** FID **955730** ✓
 Mail: 12900 Foster, Suite 400; Licensing & Certification Dept Overland Park, KS
 Site: 1200 Parkway Drive Goldsboro, NC 27534-
 Licensee: **Tar Heel Health Care Services, Inc.** County **Wayne**
Phone **(919)731-7254**

License No	Effective	Expires	Closed	Terminated	Sanction	Begin	End
✓ HC1299	01/01/2012	12/31/2012					

Gentiva Health Services Svc Type **HC** FID **960123** ✓
 Mail: Attn: Licensing & Regulatory Dept; 12900 Foster Street, Suite 400 Overland Park,
 Site: 145 Kimel Park, Suite 140 Winston Salem, NC 27103-
 Licensee: **Gentiva Health Services (USA), Inc.** County **Forsyth**
Phone **(336)760-0520**

License No	Effective	Expires	Closed	Terminated	Sanction	Begin	End
HC1373	01/01/2009	12/31/2009	12/31/2009		Close Facility	12/31/2009	

Gentiva Health Services Svc Type **HC** FID **960124**
 Mail: Attn: Licensing & Regulatory Dept.; 12900 Foster Street, Suite 400 Overland Park,
 Site: 1144 Lenoir Rhyne Blvd., SE Hickory, NC 28602-
 Licensee: **Gentiva Health Services (USA), Inc.** County **Catawba**
Phone **(828)322-6131**

License No	Effective	Expires	Closed	Terminated	Sanction	Begin	End
HC1374	01/01/2009	12/31/2009	12/13/2009		Close Facility	12/13/2009	

Gentiva Health Services Svc Type **HC** FID **960125**
 Mail: Attn: Licensing & Regulatory Dept.; 12900 Foster Street, Suite 400 Overland Park,
 Site: 136 Fairview Road, Suite 110 Mooresville, NC 28117-
 Licensee: **Gentiva Health Services (USA), Inc.** County **Iredell**
Phone **(704)799-4611**

License No	Effective	Expires	Closed	Terminated	Sanction	Begin	End
HC1375	01/01/2011	12/31/2011	12/31/2011		Close Facility	12/31/2011	

Gentiva Health Services Svc Type **HC** FID **960126**
 Mail: Attn: Licensing & Regulatory Dept.; 12900 Foster Street, Suite 400 Overland Park,
 Site: 297 East 22nd Street Kannapolis, NC 28083-
 Licensee: **Gentiva Health Services (USA), Inc.** County **Rowan**
Phone **(704)933-1001**

License No	Effective	Expires	Closed	Terminated	Sanction	Begin	End
HC1376	01/01/2011	12/31/2011	12/31/2011		Close Facility	12/31/2011	

Gentiva Health Services Svc Type **HC** FID **960127**
 Mail: Attn: Licensing & Regulatory Dept.; 12900 Foster Street, Suite 400 Overland Park,
 Site: 8520 Cliff Cameron Drive, Suite 140 Charlotte, NC 28269-
 Licensee: **Gentiva Health Services (USA), Inc.** County **Mecklenburg**
Phone **(704)594-9029**

License No	Effective	Expires	Closed	Terminated	Sanction	Begin	End
HC1377	01/01/2010	12/31/2010	12/31/2010		Close Facility	12/31/2010	

Home Care Master Facility Data

10/19/2012

All and Ordered by Facility

Gentiva Health Services

Svc Type NP FID 960284

Mail: Attn: Licensing & Regulatory Dept.; 12900 Foster Street, Suite 400 Overland Park,
 Site: 1002 North Church Street Greensboro, NC 27401-

County Guilford
 Phone (336)379-7413

Licensee: **Gentiva Health Services (USA), Inc.**

License No	Effective	Expires	Closed	Terminated	Sanction	Begin	End
NP1394	01/01/2009	12/31/2009	12/31/2009		Close Facility	12/31/2009	

Gentiva Health Services

Svc Type NP FID 960285

Mail: Attn: Licensing and Regulatory Dept; 12900 Foster Street, Suite 400 Overland Park,
 Site: 237 North Fayetteville Street, Suite C Asheboro, NC 27203-

County Randolph
 Phone (336)629-3178

Licensee: **Gentiva Health Services(USA), Inc.**

License No	Effective	Expires	Closed	Terminated	Sanction	Begin	End
NP1395	01/01/2009	12/31/2009	12/31/2009		Close Facility	12/31/2009	

Gentiva Health Services

Svc Type NP FID 970605

Mail: Attn: Licensing & Regulatory Dept.; 12900 Foster Street, Suite 400 Overland Park,
 Site: 8520 Cliff Cameron Drive, Suite 140 Charlotte, NC 28269-

County Mecklenburg
 Phone (704)594-9029

Licensee: **Gentiva Health Services(USA), Inc.**

License No	Effective	Expires	Closed	Terminated	Sanction	Begin	End
NP1531	01/01/2009	12/31/2009	12/31/2009		Close Facility	12/31/2009	

Gentiva Health Services

Svc Type HC FID 971067 ✓

Mail: 12900 Foster, Suite 400; Licensing & Certification Dept Overland Park, KS 66213-
 Site: 206 South Turner Street Pink Hill, NC 28572-

County Lenoir
 Phone (252)568-6022

Licensee: **Tar Heel Health Care Services, Inc.**

License No	Effective	Expires	Closed	Terminated	Sanction	Begin	End
13 ✓ HC1565	01/01/2012	12/31/2012					

Gentiva Health Services

Svc Type HC FID 980843 ✓

Mail: 12900 Foster, Suite 400; Licensing & Certification Dept Overland Park, KS 66213-
 Site: 167 Moore Road King, NC 27021-

County Stokes
 Phone (336)983-2110

Licensee: **Capital CareResources, Inc.**

License No	Effective	Expires	Closed	Terminated	Sanction	Begin	End
5 ✓ HC1699	01/01/2012	12/31/2012					

Certification Master Facility Data

10/19/2012

Active and Ordered by FID

GENTIVA HEALTH SERVICES

Svc Type HC FID 011257

Mail: 12900 Foster, Suite 400; Licensing & Certification Dept Overland Park, KS 66213-

County Durham

Site: 2505 Meridian Parkway, Suite 225 Durham, NC 27713-

Phone (919)361-1921

Facility: Gentiva Health Services

*page 1 - 1-11
page 2 - 12-18*

011257

924153

954038

*3
1
2
6
15
?
?
?
9
12
10
9
8
17
18*

Provider	Prog Type	Fac Type	Effective	Total Beds	Terminated
347236 X	18	HHA	07/04/2002	0	
347235 X	18	HHA	04/03/2002	0	
347196 ✓	18	HHA	12/19/1992	0	
347178 X	18	HHA	02/27/1989	0	
347217 X	18	HHA	04/09/1996	0	
347075	18	HHA	09/22/1977	0	
347177	18	HHA	12/02/1988	0	
347170	18	HHA	06/25/1987	0	
347031 ✓	18	HHA	08/01/1976	0	
347124 ✓	18	HHA	12/20/1984	0	
347171 X	18	HHA	09/08/1987	0	
347329 ✓	18	HHA	11/07/2002	0	
347328 ✓	18	HHA	11/15/2002	0	
347091 ? ✓	18	HHA	10/01/1978	0	
347318 ✓	18	HHA	06/01/1998	0	
347204	18	HHA	03/24/1994	0	
347194	18	HHA	07/21/1992	0	
347333 ✓	18	HHA	01/05/2004	0	

Certification Master Facility Data

10/19/2012

Active and Ordered by FID

GENTIVA HEALTH SERVICES Svc Type **HC** FID **954180**
 Mail: 12900 Foster, Suite 400; Licensing & Certification Dept Overland Park, KS 66213- County **Cleveland**
 Site: 425 Cherryville Road, Suite A Shelby, NC 28150- Phone **(704)484-3294**
 Facility: **Gentiva Health Services**

954038
10

Provider	Prog Type	Fac Type	Effective	Total Beds	Terminated
347317 ✓	18	HHA	06/01/1998	0	

GENTIVA HEALTH SERVICES Svc Type **HC** FID **955208**
 Mail: 12900 Foster Suite 400; Licensing & Certification Dept Overland Park, KS 66213- County **Forsyth**
 Site: 720 Parke Centre, Suite A Kernersville, NC 27284- Phone **(336)564-0185**
 Facility: **Gentiva Health Services**

955208
4

Provider	Prog Type	Fac Type	Effective	Total Beds	Terminated
347227 ✓	18/19	HHA	10/12/1998	0	

GENTIVA HEALTH SERVICES Svc Type **HC** FID **955730**
 Mail: 12900 Foster, Suite 400; Licensing & Certification Dept Overland Park, KS County **Wayne**
 Site: 1200 Parkway Drive Goldsboro, NC 27534- Phone **(919)731-7254**
 Facility: **Gentiva Health Services**

955730
11
13
5

Provider	Prog Type	Fac Type	Effective	Total Beds	Terminated
347331 ✓	18	HHA	12/03/2003	0	
347300	18	HHA	05/30/1996	0	
347226 ✓	18	HHA	04/16/1998	0	
347330 ✓	18	HHA	07/03/2003	0	

Certification Master Facility Data

10/19/2012

Active and Ordered by Provider Name

GENTIVA HEALTH SERVICES

Svc Type **HC** FID **011257** ✓

Mail: 12900 Foster, Suite 400; Licensing & Certification Dept Overland Park, KS 66213-

County **Durham**

Site: 2505 Meridian Parkway, Suite 225 Durham, NC 27713-

Phone **(919)361-1921**

Facility: **Gentiva Health Services**

Provider	Prog Type	Fac Type	Effective	Total Beds	Terminated
347236	18	HHA	07/04/2002	0	
347235	18	HHA	04/03/2002	0	
347178	18	HHA	02/27/1989	0	
347217	18	HHA	04/09/1996	0	
347075	18	HHA	09/22/1977	0	
347177	18	HHA	12/02/1988	0	
347170	18	HHA	06/25/1987	0	

GENTIVA HEALTH SERVICES

Svc Type **HC** FID **924061**

Mail: 5200 Park Road; Suite 218 Charlotte, NC 28209-

County **Mecklenburg**

Site: 5200 Park Road Charlotte, NC 28209-

Phone **(704)522-0830**

Facility: **Soleus Healthcare Svcs. of the Southern Heartland, Inc**

Provider	Prog Type	Fac Type	Effective	Total Beds	Terminated
347196	18	HHA	12/02/1992	0	

GENTIVA HEALTH SERVICES

Svc Type **HC** FID **924153** ✓

Mail: 12900 Foster, Suite 400; Licensing & Certification Dept Overland Park, KS 66213-

County **Pitt**

Site: 1970 B2 W. Arlington Boulevard Greenville, NC 27834-

Phone **(252)353-3300**

Facility: **Gentiva Health Services**

Provider	Prog Type	Fac Type	Effective	Total Beds	Terminated
347031	18	HHA	08/01/1976	0	
347124	18	HHA	12/20/1984	0	
347171	18	HHA	09/08/1987	0	
347329	18	HHA	11/07/2002	0	
347328	18	HHA	11/15/2002	0	
347318	18	HHA	06/01/1998	0	

Certification Master Facility Data

10/19/2012

Active and Ordered by Provider Name

GENTIVA HEALTH SERVICES

Svc Type HC FID 944471

Mail: 12900 Foster, Suite 400; Licensing & Certification Dept Overland Park, KS 66213-
 Site: 3187 Peters Creek Parkway, Suite B Winston Salem, NC 27127-4713
 Facility: **Gentiva Health Services**

County **Forsyth**
 Phone **(336)397-3331**

Provider	Prog Type	Fac Type	Effective	Total Beds	Terminated
347204	18	HHA	03/24/1994	0	

GENTIVA HEALTH SERVICES

Svc Type HC FID 954033

Mail: P. O. Box 25653 Winston-Salem, NC 27114-5653
 Site: 1100 South Stratford Road Winston-Salem, NC 27103-
 Facility: **Olsten Kimberly QualityCare**

County **Forsyth**
 Phone **(336)760-0520**

Provider	Prog Type	Fac Type	Effective	Total Beds	Terminated
347174	18	HHA	06/29/1988	0	

GENTIVA HEALTH SERVICES

Svc Type HC FID 954038

Mail: Licensing & Certification Dept; 12900 Foster Street, Suite 400 Overland Park, KS
 Site: 208 - A West Salisbury Street Asheboro, NC 27203-
 Facility: **Gentiva Health Services**

County **Randolph**
 Phone **(336)629-3178**

Provider	Prog Type	Fac Type	Effective	Total Beds	Terminated
347194	18	HHA	07/21/1992	0	

Provider	Prog Type	Fac Type	Effective	Total Beds	Terminated
347333	18	HHA	01/05/2004	0	

Provider	Prog Type	Fac Type	Effective	Total Beds	Terminated
347317	18	HHA	06/01/1998	0	

GENTIVA HEALTH SERVICES

Svc Type HC FID 955208 ✓

Mail: 12900 Foster Suite 400; Licensing & Certification Dept Overland Park, KS 66213-
 Site: 720 Parke Centre, Suite A Kernersville, NC 27284-
 Facility: **Gentiva Health Services**

County **Forsyth**
 Phone **(336)564-0185**

Provider	Prog Type	Fac Type	Effective	Total Beds	Terminated
347227	18/19	HHA	10/12/1998	0	

GENTIVA HEALTH SERVICES

Svc Type HC FID 955730 ✓

Mail: 12900 Foster, Suite 400; Licensing & Certification Dept Overland Park, KS
 Site: 1200 Parkway Drive Goldsboro, NC 27534-
 Facility: **Gentiva Health Services**

County **Wayne**
 Phone **(919)731-7254**

Provider	Prog Type	Fac Type	Effective	Total Beds	Terminated
347331	18	HHA	12/03/2003	0	

Provider	Prog Type	Fac Type	Effective	Total Beds	Terminated
347300	18	HHA	05/30/1996	0	

Provider	Prog Type	Fac Type	Effective	Total Beds	Terminated
347226	18	HHA	04/16/1998	0	

Provider	Prog Type	Fac Type	Effective	Total Beds	Terminated
347330	18	HHA	07/03/2003	0	

Home Care Master Facility Data

11/02/2012

All and Ordered by Facility

Gentiva Health Services

Svc Type HC FID 955208

Mail: 12900 Foster Suite 400; Licensing & Certification Dept Overland Park, KS 66213-

County Forsyth

Site: 720 Parke Centre, Suite A Kernersville, NC 27284-

Phone (336)564-0185

Licensee: **Capital CareResources, Inc.**

License No	Effective	Expires	Closed	Terminated	Sanction	Begin	End
HC1210	01/01/2012	12/31/2012					